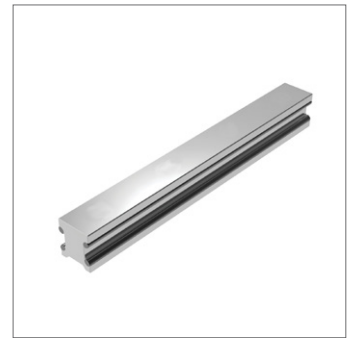
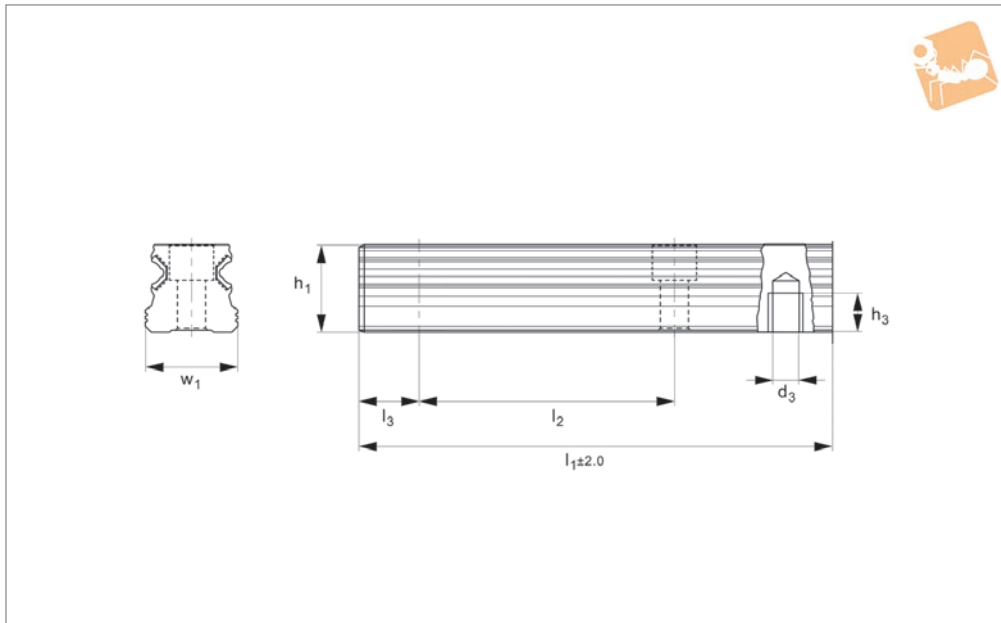




25mm Aluminium Linear Guide Rail

rear fixing with stainless raceways

Linear Guide-ways



L1018.25R

LINEAR GUIDEWAYS

Material

Aluminium profile (AlMgSi0.5, anodized 12-15µ). Raceway stainless steel (X46Cr13), hardened to 58-62HRC.

versus steel versions. The aluminium rails are made of high quality aluminium alloy with hardened stainless steel raceway.

weight aluminium carriages. For standard steel linear guideways and carriages see part no. L1016.

Technical Notes

Compact, light-weight design. 60% saving

Tips

These are very lightweight aluminium rails and can only be used with our light-

Order No.	Rail size	l_1	w_1	h_1	d_3	h_3	l_2	l_3	Weight kg
L1018.25-0180-R	25	180	25	21.8	M6	12	60	28	0.2
L1018.25-0240-R	25	240	25	21.8	M6	12	60	28	0.3
L1018.25-0300-R	25	300	25	21.8	M6	12	60	28	0.4
L1018.25-0360-R	25	360	25	21.8	M6	12	60	28	0.5
L1018.25-0420-R	25	420	25	21.8	M6	12	60	28	0.5
L1018.25-0480-R	25	480	25	21.8	M6	12	60	28	0.6
L1018.25-0540-R	25	540	25	21.8	M6	12	60	28	0.7
L1018.25-0600-R	25	600	25	21.8	M6	12	60	28	0.8
L1018.25-0660-R	25	660	25	21.8	M6	12	60	28	0.8
L1018.25-0720-R	25	720	25	21.8	M6	12	60	28	0.9
L1018.25-0780-R	25	780	25	21.8	M6	12	60	28	1.0
L1018.25-0840-R	25	840	25	21.8	M6	12	60	28	1.1
L1018.25-0900-R	25	900	25	21.8	M6	12	60	28	1.1
L1018.25-0960-R	25	960	25	21.8	M6	12	60	28	1.2
L1018.25-1020-R	25	1020	25	21.8	M6	12	60	28	1.3
L1018.25-1080-R	25	1080	25	21.8	M6	12	60	28	1.4
L1018.25-1140-R	25	1140	25	21.8	M6	12	60	28	1.4
L1018.25-1200-R	25	1200	25	21.8	M6	12	60	28	1.5
L1018.25-1260-R	25	1260	25	21.8	M6	12	60	28	1.6
L1018.25-1320-R	25	1320	25	21.8	M6	12	60	28	1.7
L1018.25-1380-R	25	1380	25	21.8	M6	12	60	28	1.7
L1018.25-1440-R	25	1440	25	21.8	M6	12	60	28	1.8
L1018.25-1500-R	25	1500	25	21.8	M6	12	60	28	1.9
L1018.25-1560-R	25	1560	25	21.8	M6	12	60	28	2.0
L1018.25-1620-R	25	1620	25	21.8	M6	12	60	28	2.0
L1018.25-1680-R	25	1680	25	21.8	M6	12	60	28	2.1
L1018.25-1740-R	25	1740	25	21.8	M6	12	60	28	2.2
L1018.25-1800-R	25	1800	25	21.8	M6	12	60	28	2.3
L1018.25-1860-R	25	1860	25	21.8	M6	12	60	28	2.3
L1018.25-1920-R	25	1920	25	21.8	M6	12	60	28	2.4
L1018.25-1980-R	25	1980	25	21.8	M6	12	60	28	2.5



Order No.	Rail size	l_1	w_1	h_1	d_3	h_3	l_2	l_3	Weight kg
L1018.25-2040-R	25	2040	25	21.8	M6	12	60	28	2.6
L1018.25-2100-R	25	2100	25	21.8	M6	12	60	28	2.6
L1018.25-2160-R	25	2160	25	21.8	M6	12	60	28	2.7
L1018.25-2220-R	25	2220	25	21.8	M6	12	60	28	2.8
L1018.25-2280-R	25	2280	25	21.8	M6	12	60	28	2.9
L1018.25-2340-R	25	2340	25	21.8	M6	12	60	28	2.9
L1018.25-2400-R	25	2400	25	21.8	M6	12	60	28	3.0
L1018.25-2460-R	25	2460	25	21.8	M6	12	60	28	3.1
L1018.25-2520-R	25	2520	25	21.8	M6	12	60	28	3.2
L1018.25-2580-R	25	2580	25	21.8	M6	12	60	28	3.2
L1018.25-2640-R	25	2640	25	21.8	M6	12	60	28	3.3
L1018.25-2700-R	25	2700	25	21.8	M6	12	60	28	3.4
L1018.25-2760-R	25	2760	25	21.8	M6	12	60	28	3.5
L1018.25-2820-R	25	2820	25	21.8	M6	12	60	28	3.5
L1018.25-2880-R	25	2880	25	21.8	M6	12	60	28	3.6
L1018.25-2940-R	25	2940	25	21.8	M6	12	60	28	3.7
L1018.25-3000-R	25	3000	25	21.8	M6	12	60	28	3.8
L1018.25-3060-R	25	3060	25	21.8	M6	12	60	28	3.8
L1018.25-3120-R	25	3120	25	21.8	M6	12	60	28	3.9
L1018.25-3180-R	25	3180	25	21.8	M6	12	60	28	4.0
L1018.25-3240-R	25	3240	25	21.8	M6	12	60	28	4.1
L1018.25-3300-R	25	3300	25	21.8	M6	12	60	28	4.1
L1018.25-3360-R	25	3360	25	21.8	M6	12	60	28	4.2
L1018.25-3420-R	25	3420	25	21.8	M6	12	60	28	4.3
L1018.25-3480-R	25	3480	25	21.8	M6	12	60	28	4.4
L1018.25-3540-R	25	3540	25	21.8	M6	12	60	28	4.4
L1018.25-3600-R	25	3600	25	21.8	M6	12	60	28	4.5
L1018.25-3660-R	25	3660	25	21.8	M6	12	60	28	4.6
L1018.25-3720-R	25	3720	25	21.8	M6	12	60	28	4.7
L1018.25-3780-R	25	3780	25	21.8	M6	12	60	28	4.7
L1018.25-3840-R	25	3840	25	21.8	M6	12	60	28	4.8
L1018.25-3900-R	25	3900	25	21.8	M6	12	60	28	4.9
L1018.25-3960-R	25	3960	25	21.8	M6	12	60	28	5.0
L1018.25-4000-R	25	4000	25	21.8	M6	12	60	28	5.0

Ordering Example

