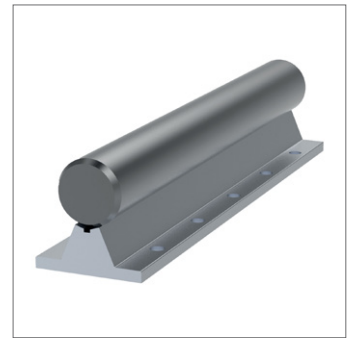
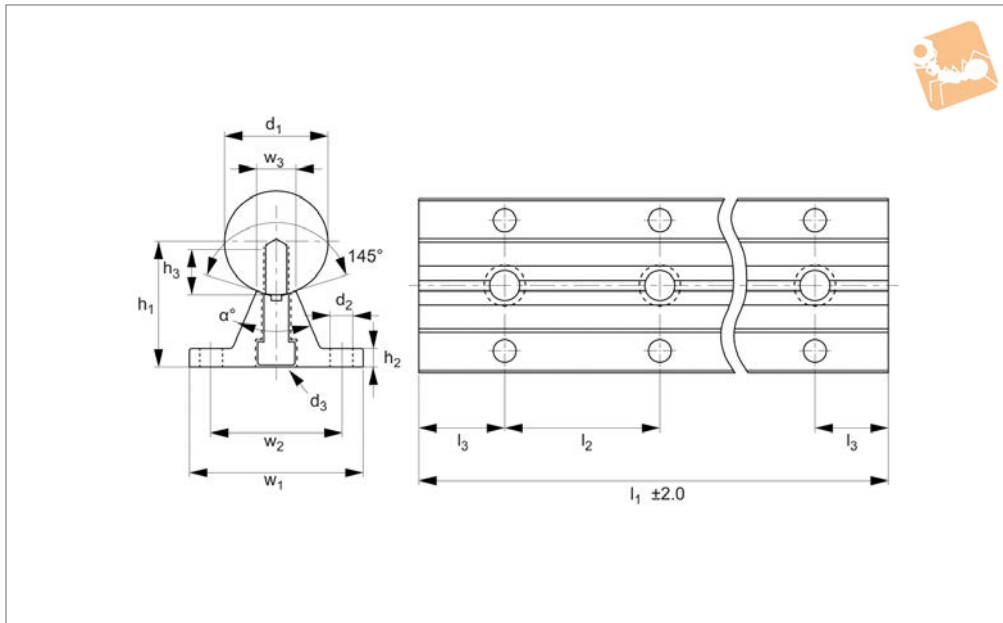




# 16Ø Shaft Support Rails

complete shaft and rail



**L1780.16**

LINEAR SHAFT SUPPORTS

**Material**

Hardened and ground carbon steel shaft (070M55, Cf53 - DIN 1.1213), aluminium alloy support rail.  
Surface hardness of steel shaft 60-65 HRC.

**Technical Notes**

For open linear bushings, ensures a very rigid and stiff system.

The shaft is pre-mounted to the shaft support rail.

Standard lengths are shown which allow the distance to the first and last hole to be equal (ie  $l_2/2$ ). Different holes pitches available on request.

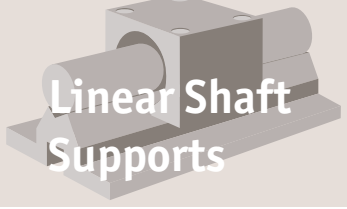
Straightness:  $\pm 0.1\text{mm/metre}$ .

**Tips**

For linear carriages see part no. L1755 (flanged) or L1752 (unflanged).  
Stainless steel carriages also available, see part no. L1756 (flanged) or L1753 (unflanged).

On request a stainless steel (usually 440C) shaft can be mounted on the support rail.

Order No.	$d_1$ tol. h6	$d_2$	$d_3$	$l_1$	$l_2$	$l_3$	$w_1$	$w_2$	$w_3$	$h_1$ $\pm 0.01$	$h_2$	$h_3$	$\alpha$
L1780.16-0300	16	5.5	M5x20	300	150	75	45	33	7	26	5	9	50
L1780.16-0450	16	5.5	M5x20	450	150	75	45	33	7	26	5	9	50
L1780.16-0600	16	5.5	M5x20	600	150	75	45	33	7	26	5	9	50
L1780.16-0750	16	5.5	M5x20	750	150	75	45	33	7	26	5	9	50
L1780.16-0900	16	5.5	M5x20	900	150	75	45	33	7	26	5	9	50
L1780.16-1050	16	5.5	M5x20	1050	150	75	45	33	7	26	5	9	50
L1780.16-1200	16	5.5	M5x20	1200	150	75	45	33	7	26	5	9	50
L1780.16-1350	16	5.5	M5x20	1350	150	75	45	33	7	26	5	9	50
L1780.16-1500	16	5.5	M5x20	1500	150	75	45	33	7	26	5	9	50
L1780.16-1650	16	5.5	M5x20	1650	150	75	45	33	7	26	5	9	50
L1780.16-1800	16	5.5	M5x20	1800	150	75	45	33	7	26	5	9	50
L1780.16-1950	16	5.5	M5x20	1950	150	75	45	33	7	26	5	9	50
L1780.16-2100	16	5.5	M5x20	2100	150	75	45	33	7	26	5	9	50
L1780.16-2250	16	5.5	M5x20	2250	150	75	45	33	7	26	5	9	50
L1780.16-2400	16	5.5	M5x20	2400	150	75	45	33	7	26	5	9	50
L1780.16-2550	16	5.5	M5x20	2550	150	75	45	33	7	26	5	9	50
L1780.16-2700	16	5.5	M5x20	2700	150	75	45	33	7	26	5	9	50
L1780.16-2850	16	5.5	M5x20	2850	150	75	45	33	7	26	5	9	50
L1780.16-3000	16	5.5	M5x20	3000	150	75	45	33	7	26	5	9	50
L1780.16-3150	16	5.5	M5x20	3150	150	75	45	33	7	26	5	9	50
L1780.16-3300	16	5.5	M5x20	3300	150	75	45	33	7	26	5	9	50
L1780.16-3450	16	5.5	M5x20	3450	150	75	45	33	7	26	5	9	50
L1780.16-3600	16	5.5	M5x20	3600	150	75	45	33	7	26	5	9	50
L1780.16-3750	16	5.5	M5x20	3750	150	75	45	33	7	26	5	9	50
L1780.16-3900	16	5.5	M5x20	3900	150	75	45	33	7	26	5	9	50
L1780.16-4050	16	5.5	M5x20	4050	150	75	45	33	7	26	5	9	50
L1780.16-4200	16	5.5	M5x20	4200	150	75	45	33	7	26	5	9	50
L1780.16-4350	16	5.5	M5x20	4350	150	75	45	33	7	26	5	9	50
L1780.16-4500	16	5.5	M5x20	4500	150	75	45	33	7	26	5	9	50



# Linear Shaft Supports

## 16Ø Shaft Support Rails complete shaft and rail



LINEAR SHAFT SUPPORTS

Order No.	d <sub>1</sub> tol. h6	d <sub>2</sub>	d <sub>3</sub>	l <sub>1</sub>	l <sub>2</sub>	l <sub>3</sub>	w <sub>1</sub>	w <sub>2</sub>	w <sub>3</sub>	h <sub>1</sub> ±0.01	h <sub>2</sub>	h <sub>3</sub>	α °
L1780.16-4650	16	5.5	M5x20	4650	150	75	45	33	7	26	5	9	50
L1780.16-4800	16	5.5	M5x20	4800	150	75	45	33	7	26	5	9	50
L1780.16-4950	16	5.5	M5x20	4950	150	75	45	33	7	26	5	9	50
L1780.16-5100	16	5.5	M5x20	5100	150	75	45	33	7	26	5	9	50
L1780.16-5250	16	5.5	M5x20	5250	150	75	45	33	7	26	5	9	50
L1780.16-5400	16	5.5	M5x20	5400	150	75	45	33	7	26	5	9	50
L1780.16-5550	16	5.5	M5x20	5550	150	75	45	33	7	26	5	9	50
L1780.16-5700	16	5.5	M5x20	5700	150	75	45	33	7	26	5	9	50
L1780.16-5850	16	5.5	M5x20	5850	150	75	45	33	7	26	5	9	50
L1780.16-6000	16	5.5	M5x20	6000	150	75	45	33	7	26	5	9	50

