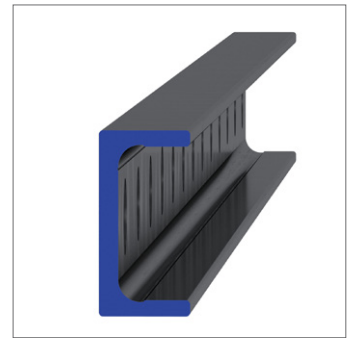
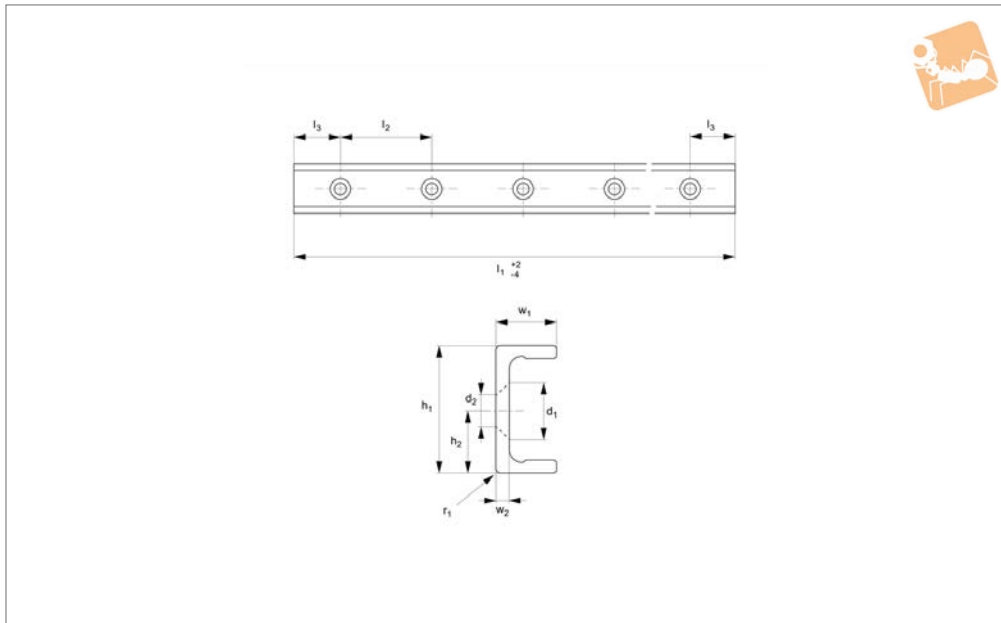




Light Duty U Rail

countersunk holes

Long Linear Rails



L1918.18U-V

LONG LINEAR RAILS

Material

Carbon steel. Raceways induction hardened and ground.
Electrolytic zinc-plated (excluding raceways).

Technical Notes

The U rail is a slave rail and is usually used

with a T master rail.

This is the U-V countersunk rail type which is usually used with a corresponding T-V rail.

For fixing use countersunk DIN 7991 screws.

Weight: 0,55 Kg/m.

Tips

Standard carriages are the L1918.CL series.

Order No.	d ₂ for screws	h ₁	h ₂	l ₁	l ₂	l ₃	r ₁	w ₁	w ₂
L1918.18U-0160-V	M4	18	9	160	80	40	1	8.25	2.6
L1918.18U-0240-V	M4	18	9	240	80	40	1	8.25	2.6
L1918.18U-0320-V	M4	18	9	320	80	40	1	8.25	2.6
L1918.18U-0400-V	M4	18	9	400	80	40	1	8.25	2.6
L1918.18U-0480-V	M4	18	9	480	80	40	1	8.25	2.6
L1918.18U-0560-V	M4	18	9	560	80	40	1	8.25	2.6
L1918.18U-0640-V	M4	18	9	640	80	40	1	8.25	2.6
L1918.18U-0720-V	M4	18	9	720	80	40	1	8.25	2.6
L1918.18U-0800-V	M4	18	9	800	80	40	1	8.25	2.6
L1918.18U-0880-V	M4	18	9	880	80	40	1	8.25	2.6
L1918.18U-0960-V	M4	18	9	960	80	40	1	8.25	2.6
L1918.18U-1040-V	M4	18	9	1040	80	40	1	8.25	2.6
L1918.18U-1120-V	M4	18	9	1120	80	40	1	8.25	2.6
L1918.18U-1200-V	M4	18	9	1200	80	40	1	8.25	2.6
L1918.18U-1280-V	M4	18	9	1280	80	40	1	8.25	2.6
L1918.18U-1360-V	M4	18	9	1360	80	40	1	8.25	2.6
L1918.18U-1440-V	M4	18	9	1440	80	40	1	8.25	2.6
L1918.18U-1520-V	M4	18	9	1520	80	40	1	8.25	2.6
L1918.18U-1600-V	M4	18	9	1600	80	40	1	8.25	2.6
L1918.18U-1680-V	M4	18	9	1680	80	40	1	8.25	2.6
L1918.18U-1760-V	M4	18	9	1760	80	40	1	8.25	2.6
L1918.18U-1840-V	M4	18	9	1840	80	40	1	8.25	2.6
L1918.18U-1920-V	M4	18	9	1920	80	40	1	8.25	2.6
L1918.18U-2000-V	M4	18	9	2000	80	40	1	8.25	2.6
L1918.18U-2080-V	M4	18	9	2080	80	40	1	8.25	2.6
L1918.18U-2160-V	M4	18	9	2160	80	40	1	8.25	2.6
L1918.18U-2240-V	M4	18	9	2240	80	40	1	8.25	2.6
L1918.18U-2320-V	M4	18	9	2320	80	40	1	8.25	2.6
L1918.18U-2400-V	M4	18	9	2400	80	40	1	8.25	2.6
L1918.18U-2480-V	M4	18	9	2480	80	40	1	8.25	2.6
L1918.18U-2560-V	M4	18	9	2560	80	40	1	8.25	2.6

Long Linear Rails

Light Duty U Rail countersunk holes



Order No.	d ₂ for screws	h ₁	h ₂	l ₁	l ₂	l ₃	r ₁	w ₁	w ₂
L1918.18U-2640-V	M4	18	9	2640	80	40	1	8.25	2.6
L1918.18U-2720-V	M4	18	9	2720	80	40	1	8.25	2.6
L1918.18U-2800-V	M4	18	9	2800	80	40	1	8.25	2.6
L1918.18U-2880-V	M4	18	9	2880	80	40	1	8.25	2.6
L1918.18U-2960-V	M4	18	9	2960	80	40	1	8.25	2.6
L1918.18U-3040-V	M4	18	9	3040	80	40	1	8.25	2.6

LONG LINEAR RAILS