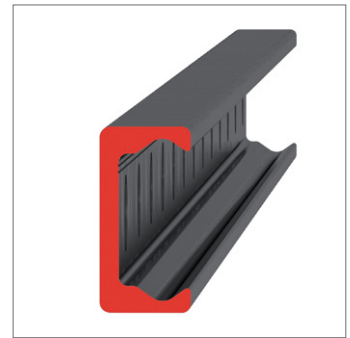
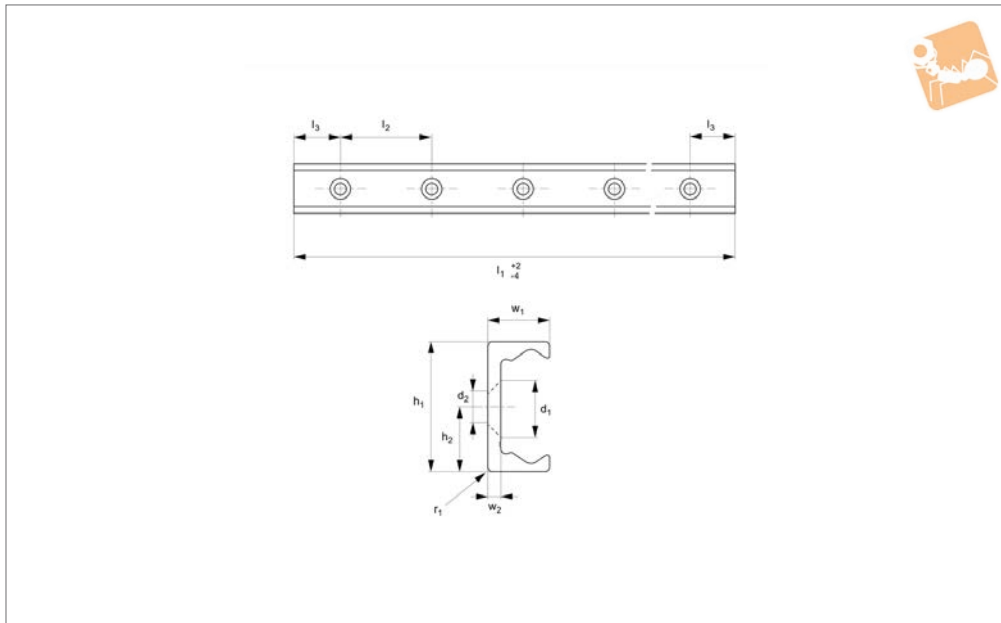




Light Duty T Rail

countersunk holes

Long Linear Rails



L1918.TLV18

LONG LINEAR RAILS

Material

Carbon steel. Raceways induction hardened and ground.
Electrolytic zinc-plated (excluding raceways).

Technical Notes

The T rail is a master rail and is usually

used with a U slave rails (allows for misalignment).
This is the TLV countersunk rail which is usually used with a corresponding ULV rail. For fixing use countersunk DIN 7991 screws.
Weight: 0,55 Kg/m.

Tips

Standard carriages are the L1918.N versions (die cast aluminium alloy with wipers). Alternatively the L1918.C type is also available (without wipers).

Order No.	d ₂ for screws	h ₁	h ₂	l ₁	l ₂	l ₃	r ₁	w ₁	w ₂
L1918.TLV18-0160	M4	18	9	160	80	40	1.5	8.25	2.8
L1918.TLV18-0240	M4	18	9	240	80	40	1.5	8.25	2.8
L1918.TLV18-0320	M4	18	9	320	80	40	1.5	8.25	2.8
L1918.TLV18-0400	M4	18	9	400	80	40	1.5	8.25	2.8
L1918.TLV18-0480	M4	18	9	480	80	40	1.5	8.25	2.8
L1918.TLV18-0560	M4	18	9	560	80	40	1.5	8.25	2.8
L1918.TLV18-0640	M4	18	9	640	80	40	1.5	8.25	2.8
L1918.TLV18-0720	M4	18	9	720	80	40	1.5	8.25	2.8
L1918.TLV18-0800	M4	18	9	800	80	40	1.5	8.25	2.8
L1918.TLV18-0880	M4	18	9	880	80	40	1.5	8.25	2.8
L1918.TLV18-0960	M4	18	9	960	80	40	1.5	8.25	2.8
L1918.TLV18-1040	M4	18	9	1040	80	40	1.5	8.25	2.8
L1918.TLV18-1120	M4	18	9	1120	80	40	1.5	8.25	2.8
L1918.TLV18-1200	M4	18	9	1200	80	40	1.5	8.25	2.8
L1918.TLV18-1280	M4	18	9	1280	80	40	1.5	8.25	2.8
L1918.TLV18-1360	M4	18	9	1360	80	40	1.5	8.25	2.8
L1918.TLV18-1440	M4	18	9	1440	80	40	1.5	8.25	2.8
L1918.TLV18-1520	M4	18	9	1520	80	40	1.5	8.25	2.8
L1918.TLV18-1600	M4	18	9	1600	80	40	1.5	8.25	2.8
L1918.TLV18-1680	M4	18	9	1680	80	40	1.5	8.25	2.8
L1918.TLV18-1760	M4	18	9	1760	80	40	1.5	8.25	2.8
L1918.TLV18-1840	M4	18	9	1840	80	40	1.5	8.25	2.8
L1918.TLV18-1920	M4	18	9	1920	80	40	1.5	8.25	2.8
L1918.TLV18-2000	M4	18	9	2000	80	40	1.5	8.25	2.8