

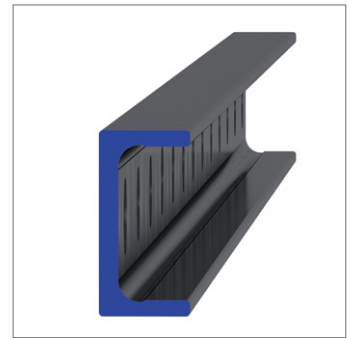
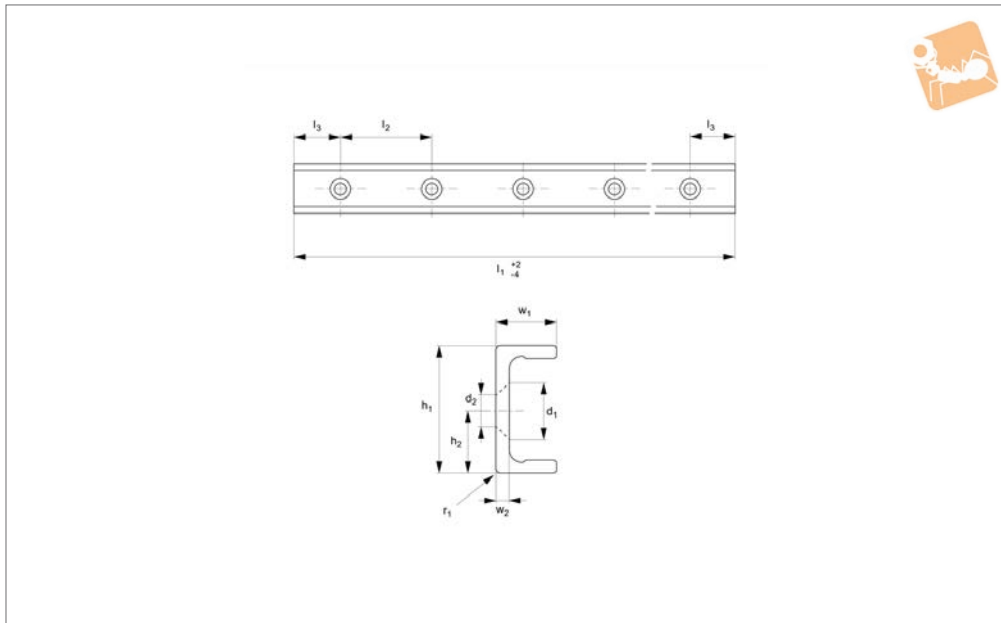


Medium Duty U Rail

countersunk holes



Long Linear Rails



L1928.ULV28

LONG LINEAR RAILS

Material

Carbon steel. Raceways induction hardened and ground.
Electrolytic zinc-plated (excluding raceways).

Technical Notes

The U rail is a slave rail and is usually used

with a T master rail.

This is the ULV countersunk rail type which is usually used with a corresponding TLV rail.

For fixing use countersunk DIN 7991 screws.

Weight: 1,0 Kg/m.

Tips

Standard carriages are the L1928.N versions (die cast aluminium alloy with wipers). Alternatively the L1928.C type is also available (without wipers).

| Order No. | d ₂ for screws | h ₁ | h ₂ | l ₁ | l ₂ | l ₃ | r ₁ | w ₁ | w ₂ |
|------------------|---------------------------|----------------|----------------|----------------|----------------|----------------|----------------|----------------|----------------|
| L1928.ULV28-0240 | M5 | 28 | 14 | 240 | 80 | 40 | 1 | 12 | 3 |
| L1928.ULV28-0320 | M5 | 28 | 14 | 320 | 80 | 40 | 1 | 12 | 3 |
| L1928.ULV28-0400 | M5 | 28 | 14 | 400 | 80 | 40 | 1 | 12 | 3 |
| L1928.ULV28-0480 | M5 | 28 | 14 | 480 | 80 | 40 | 1 | 12 | 3 |
| L1928.ULV28-0560 | M5 | 28 | 14 | 560 | 80 | 40 | 1 | 12 | 3 |
| L1928.ULV28-0640 | M5 | 28 | 14 | 640 | 80 | 40 | 1 | 12 | 3 |
| L1928.ULV28-0720 | M5 | 28 | 14 | 720 | 80 | 40 | 1 | 12 | 3 |
| L1928.ULV28-0800 | M5 | 28 | 14 | 800 | 80 | 40 | 1 | 12 | 3 |
| L1928.ULV28-0880 | M5 | 28 | 14 | 880 | 80 | 40 | 1 | 12 | 3 |
| L1928.ULV28-0960 | M5 | 28 | 14 | 960 | 80 | 40 | 1 | 12 | 3 |
| L1928.ULV28-1040 | M5 | 28 | 14 | 1040 | 80 | 40 | 1 | 12 | 3 |
| L1928.ULV28-1120 | M5 | 28 | 14 | 1120 | 80 | 40 | 1 | 12 | 3 |
| L1928.ULV28-1200 | M5 | 28 | 14 | 1200 | 80 | 40 | 1 | 12 | 3 |
| L1928.ULV28-1280 | M5 | 28 | 14 | 1280 | 80 | 40 | 1 | 12 | 3 |
| L1928.ULV28-1360 | M5 | 28 | 14 | 1360 | 80 | 40 | 1 | 12 | 3 |
| L1928.ULV28-1440 | M5 | 28 | 14 | 1440 | 80 | 40 | 1 | 12 | 3 |
| L1928.ULV28-1520 | M5 | 28 | 14 | 1520 | 80 | 40 | 1 | 12 | 3 |
| L1928.ULV28-1600 | M5 | 28 | 14 | 1600 | 80 | 40 | 1 | 12 | 3 |
| L1928.ULV28-1680 | M5 | 28 | 14 | 1680 | 80 | 40 | 1 | 12 | 3 |
| L1928.ULV28-1760 | M5 | 28 | 14 | 1760 | 80 | 40 | 1 | 12 | 3 |
| L1928.ULV28-1840 | M5 | 28 | 14 | 1840 | 80 | 40 | 1 | 12 | 3 |
| L1928.ULV28-1920 | M5 | 28 | 14 | 1920 | 80 | 40 | 1 | 12 | 3 |
| L1928.ULV28-2000 | M5 | 28 | 14 | 2000 | 80 | 40 | 1 | 12 | 3 |
| L1928.ULV28-2080 | M5 | 28 | 14 | 2080 | 80 | 40 | 1 | 12 | 3 |
| L1928.ULV28-2160 | M5 | 28 | 14 | 2160 | 80 | 40 | 1 | 12 | 3 |
| L1928.ULV28-2240 | M5 | 28 | 14 | 2240 | 80 | 40 | 1 | 12 | 3 |
| L1928.ULV28-2320 | M5 | 28 | 14 | 2320 | 80 | 40 | 1 | 12 | 3 |
| L1928.ULV28-2400 | M5 | 28 | 14 | 2400 | 80 | 40 | 1 | 12 | 3 |
| L1928.ULV28-2480 | M5 | 28 | 14 | 2480 | 80 | 40 | 1 | 12 | 3 |
| L1928.ULV28-2560 | M5 | 28 | 14 | 2560 | 80 | 40 | 1 | 12 | 3 |
| L1928.ULV28-2640 | M5 | 28 | 14 | 2640 | 80 | 40 | 1 | 12 | 3 |



| Order No. | d ₂ for screws | h ₁ | h ₂ | l ₁ | l ₂ | l ₃ | r ₁ | w ₁ | w ₂ |
|------------------|---------------------------|----------------|----------------|----------------|----------------|----------------|----------------|----------------|----------------|
| L1928.ULV28-2720 | M5 | 28 | 14 | 2720 | 80 | 40 | 1 | 12 | 3 |
| L1928.ULV28-2800 | M5 | 28 | 14 | 2800 | 80 | 40 | 1 | 12 | 3 |
| L1928.ULV28-2880 | M5 | 28 | 14 | 2880 | 80 | 40 | 1 | 12 | 3 |
| L1928.ULV28-2960 | M5 | 28 | 14 | 2960 | 80 | 40 | 1 | 12 | 3 |
| L1928.ULV28-3040 | M5 | 28 | 14 | 3040 | 80 | 40 | 1 | 12 | 3 |
| L1928.ULV28-3120 | M5 | 28 | 14 | 3120 | 80 | 40 | 1 | 12 | 3 |
| L1928.ULV28-3200 | M5 | 28 | 14 | 3200 | 80 | 40 | 1 | 12 | 3 |