

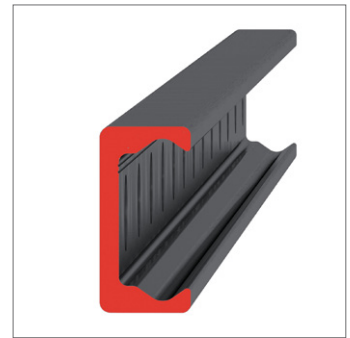
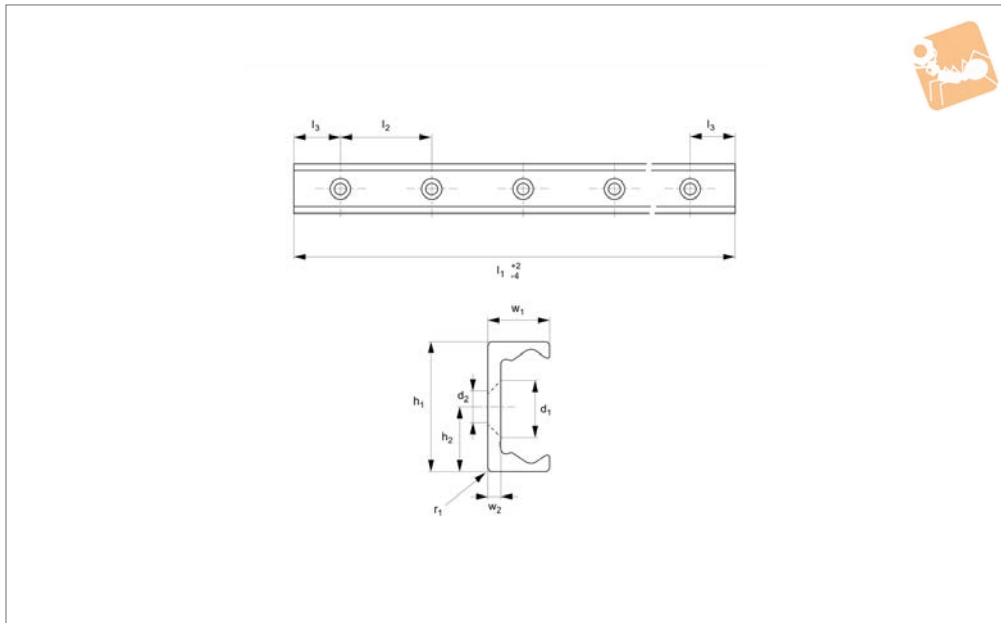


Medium Duty T Rail

countersunk holes



Long Linear Rails



L1935.TLV35

LONG LINEAR RAILS

Material

Carbon steel. Raceways induction hardened and ground.
Electrolytic zinc-plated (excluding raceways).

Technical Notes

The T rail is a master rail and is usually used with a U slave rails (allows for misalignment).
This is the TLV countersunk rail which is

usually used with a corresponding ULV rail.
For fixing use countersunk DIN 7991 screws.
Weight: 1,7 Kg/m.

Order No.	d ₂ for screws	h ₁	h ₂	l ₁	l ₂	l ₃	r ₁	w ₁	w ₂
L1935.TLV35-0320	M6	35	17.5	320	80	40	1	16	3.5
L1935.TLV35-0400	M6	35	17.5	400	80	40	1	16	3.5
L1935.TLV35-0480	M6	35	17.5	480	80	40	1	16	3.5
L1935.TLV35-0560	M6	35	17.5	560	80	40	1	16	3.5
L1935.TLV35-0640	M6	35	17.5	640	80	40	1	16	3.5
L1935.TLV35-0720	M6	35	17.5	720	80	40	1	16	3.5
L1935.TLV35-0800	M6	35	17.5	800	80	40	1	16	3.5
L1935.TLV35-0880	M6	35	17.5	880	80	40	1	16	3.5
L1935.TLV35-0960	M6	35	17.5	960	80	40	1	16	3.5
L1935.TLV35-1040	M6	35	17.5	1040	80	40	1	16	3.5
L1935.TLV35-1120	M6	35	17.5	1120	80	40	1	16	3.5
L1935.TLV35-1200	M6	35	17.5	1200	80	40	1	16	3.5
L1935.TLV35-1280	M6	35	17.5	1280	80	40	1	16	3.5
L1935.TLV35-1360	M6	35	17.5	1360	80	40	1	16	3.5
L1935.TLV35-1440	M6	35	17.5	1440	80	40	1	16	3.5
L1935.TLV35-1520	M6	35	17.5	1520	80	40	1	16	3.5
L1935.TLV35-1600	M6	35	17.5	1600	80	40	1	16	3.5
L1935.TLV35-1680	M6	35	17.5	1680	80	40	1	16	3.5
L1935.TLV35-1760	M6	35	17.5	1760	80	40	1	16	3.5
L1935.TLV35-1840	M6	35	17.5	1840	80	40	1	16	3.5
L1935.TLV35-1920	M6	35	17.5	1920	80	40	1	16	3.5
L1935.TLV35-2000	M6	35	17.5	2000	80	40	1	16	3.5
L1935.TLV35-2080	M6	35	17.5	2080	80	40	1	16	3.5
L1935.TLV35-2160	M6	35	17.5	2160	80	40	1	16	3.5
L1935.TLV35-2240	M6	35	17.5	2240	80	40	1	16	3.5
L1935.TLV35-2320	M6	35	17.5	2320	80	40	1	16	3.5
L1935.TLV35-2400	M6	35	17.5	2400	80	40	1	16	3.5
L1935.TLV35-2480	M6	35	17.5	2480	80	40	1	16	3.5
L1935.TLV35-2560	M6	35	17.5	2560	80	40	1	16	3.5
L1935.TLV35-2640	M6	35	17.5	2640	80	40	1	16	3.5
L1935.TLV35-2720	M6	35	17.5	2720	80	40	1	16	3.5
L1935.TLV35-2800	M6	35	17.5	2800	80	40	1	16	3.5
L1935.TLV35-2880	M6	35	17.5	2880	80	40	1	16	3.5



Order No.	d ₂ for screws	h ₁	h ₂	l ₁	l ₂	l ₃	r ₁	w ₁	w ₂
L1935.TLV35-2960	M6	35	17.5	2960	80	40	1	16	3.5
L1935.TLV35-3040	M6	35	17.5	3040	80	40	1	16	3.5
L1935.TLV35-3120	M6	35	17.5	3120	80	40	1	16	3.5
L1935.TLV35-3200	M6	35	17.5	3200	80	40	1	16	3.5
L1935.TLV35-3280	M6	35	17.5	3280	80	40	1	16	3.5
L1935.TLV35-3360	M6	35	17.5	3360	80	40	1	16	3.5
L1935.TLV35-3440	M6	35	17.5	3440	80	40	1	16	3.5
L1935.TLV35-3520	M6	35	17.5	3520	80	40	1	16	3.5
L1935.TLV35-3600	M6	35	17.5	3600	80	40	1	16	3.5