

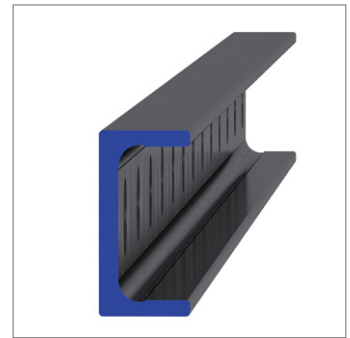
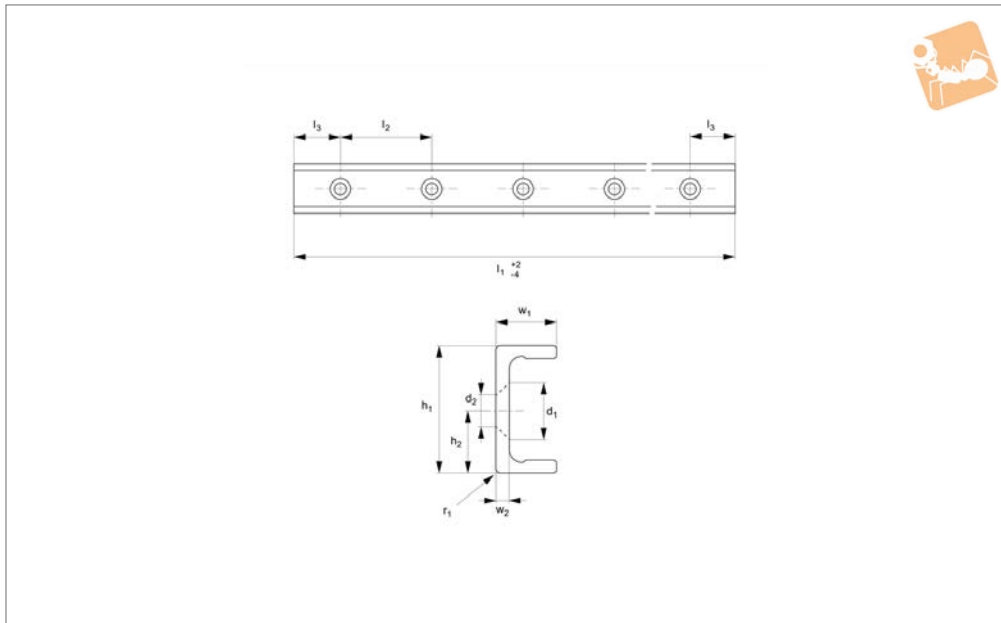


# Medium Duty U Rail

countersunk holes



## Long Linear Rails



## L1935.ULV35

LONG LINEAR RAILS

### Material

Carbon steel. Raceways induction hardened and ground.  
Electrolytic zinc-plated (excluding raceways).

### Technical Notes

The U rail is a slave rail and is usually used with a T master rail.  
This is the ULV countersunk rail type which is usually used with a corresponding TLV

rail.

For fixing use countersunk DIN 7991 screws.  
Weight: 1,7 Kg/m.

Order No.	d <sub>2</sub>	h <sub>1</sub>	h <sub>2</sub>	l <sub>1</sub>	l <sub>2</sub>	l <sub>3</sub>	r <sub>1</sub>	w <sub>1</sub>	w <sub>2</sub>
L1935.ULV35-0320	M6	35	17.5	320	80	40	1	16	3.5
L1935.ULV35-0400	M6	35	17.5	400	80	40	1	16	3.5
L1935.ULV35-0480	M6	35	17.5	480	80	40	1	16	3.5
L1935.ULV35-0560	M6	35	17.5	560	80	40	1	16	3.5
L1935.ULV35-0640	M6	35	17.5	640	80	40	1	16	3.5
L1935.ULV35-0720	M6	35	17.5	720	80	40	1	16	3.5
L1935.ULV35-0800	M6	35	17.5	800	80	40	1	16	3.5
L1935.ULV35-0880	M6	35	17.5	880	80	40	1	16	3.5
L1935.ULV35-0960	M6	35	17.5	960	80	40	1	16	3.5
L1935.ULV35-1040	M6	35	17.5	1040	80	40	1	16	3.5
L1935.ULV35-1120	M6	35	17.5	1120	80	40	1	16	3.5
L1935.ULV35-1200	M6	35	17.5	1200	80	40	1	16	3.5
L1935.ULV35-1280	M6	35	17.5	1280	80	40	1	16	3.5
L1935.ULV35-1360	M6	35	17.5	1360	80	40	1	16	3.5
L1935.ULV35-1440	M6	35	17.5	1440	80	40	1	16	3.5
L1935.ULV35-1520	M6	35	17.5	1520	80	40	1	16	3.5
L1935.ULV35-1600	M6	35	17.5	1600	80	40	1	16	3.5
L1935.ULV35-1680	M6	35	17.5	1680	80	40	1	16	3.5
L1935.ULV35-1760	M6	35	17.5	1760	80	40	1	16	3.5
L1935.ULV35-1840	M6	35	17.5	1840	80	40	1	16	3.5
L1935.ULV35-1920	M6	35	17.5	1920	80	40	1	16	3.5
L1935.ULV35-2000	M6	35	17.5	2000	80	40	1	16	3.5
L1935.ULV35-2080	M6	35	17.5	2080	80	40	1	16	3.5
L1935.ULV35-2160	M6	35	17.5	2160	80	40	1	16	3.5
L1935.ULV35-2240	M6	35	17.5	2240	80	40	1	16	3.5
L1935.ULV35-2320	M6	35	17.5	2320	80	40	1	16	3.5
L1935.ULV35-2400	M6	35	17.5	2400	80	40	1	16	3.5
L1935.ULV35-2480	M6	35	17.5	2480	80	40	1	16	3.5
L1935.ULV35-2560	M6	35	17.5	2560	80	40	1	16	3.5
L1935.ULV35-2640	M6	35	17.5	2640	80	40	1	16	3.5
L1935.ULV35-2720	M6	35	17.5	2720	80	40	1	16	3.5
L1935.ULV35-2800	M6	35	17.5	2800	80	40	1	16	3.5
L1935.ULV35-2880	M6	35	17.5	2880	80	40	1	16	3.5



Order No.	d <sub>2</sub>	h <sub>1</sub>	h <sub>2</sub>	l <sub>1</sub>	l <sub>2</sub>	l <sub>3</sub>	r <sub>1</sub>	w <sub>1</sub>	w <sub>2</sub>
L1935.ULV35-2960	M6	35	17.5	2960	80	40	1	16	3.5
L1935.ULV35-3040	M6	35	17.5	3040	80	40	1	16	3.5
L1935.ULV35-3120	M6	35	17.5	3120	80	40	1	16	3.5
L1935.ULV35-3200	M6	35	17.5	3200	80	40	1	16	3.5
L1935.ULV35-3280	M6	35	17.5	3280	80	40	1	16	3.5
L1935.ULV35-3360	M6	35	17.5	3360	80	40	1	16	3.5
L1935.ULV35-3440	M6	35	17.5	3440	80	40	1	16	3.5
L1935.ULV35-3520	M6	35	17.5	3520	80	40	1	16	3.5
L1935.ULV35-3600	M6	35	17.5	3600	80	40	1	16	3.5