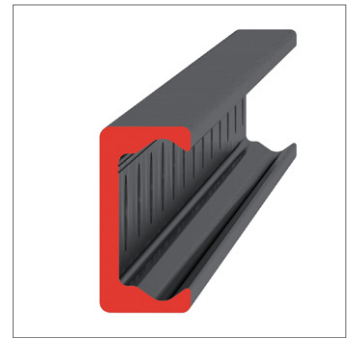
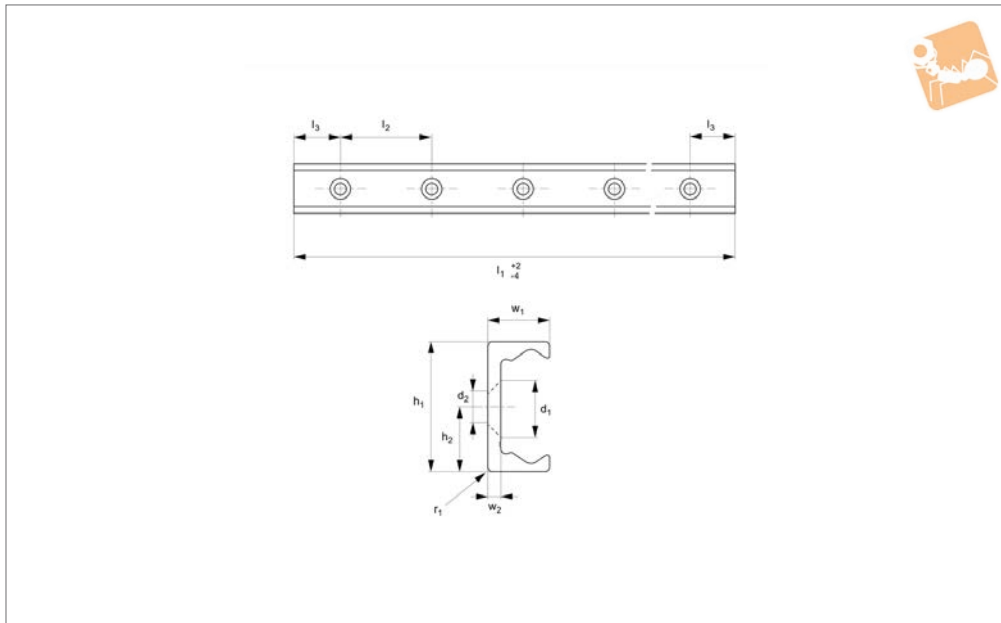




# Heavy Duty T Rail

countersunk holes

# Long Linear Rails



## L1943.43T-V

LONG LINEAR RAILS

### Material

Carbon steel. Raceways induction hardened and ground.  
Electrolytic zinc-plated (excluding raceways).

### Technical Notes

The T rail is a master rail and is usually

used with a U slave rails (allows for misalignment).

This is the T-V countersunk rail which is usually used with a corresponding U-V rail. For fixing use countersunk DIN 7991 screws.

Weight: 2,6 Kg/m.

### Tips

Standard carriages are the L1943.CL series.

Order No.	d <sub>1</sub> for screw	h <sub>1</sub>	h <sub>2</sub>	l <sub>1</sub>	l <sub>2</sub>	l <sub>3</sub>	r <sub>1</sub>	w <sub>1</sub>	w <sub>2</sub>
L1943.43T-0400-V	M8	43	21.5	400	80	40	1	21	4.5
L1943.43T-0480-V	M8	43	21.5	480	80	40	1	21	4.5
L1943.43T-0560-V	M8	43	21.5	560	80	40	1	21	4.5
L1943.43T-0640-V	M8	43	21.5	640	80	40	1	21	4.5
L1943.43T-0720-V	M8	43	21.5	720	80	40	1	21	4.5
L1943.43T-0800-V	M8	43	21.5	800	80	40	1	21	4.5
L1943.43T-0880-V	M8	43	21.5	880	80	40	1	21	4.5
L1943.43T-0960-V	M8	43	21.5	960	80	40	1	21	4.5
L1943.43T-1040-V	M8	43	21.5	1040	80	40	1	21	4.5
L1943.43T-1120-V	M8	43	21.5	1120	80	40	1	21	4.5
L1943.43T-1200-V	M8	43	21.5	1200	80	40	1	21	4.5
L1943.43T-1280-V	M8	43	21.5	1280	80	40	1	21	4.5
L1943.43T-1360-V	M8	43	21.5	1360	80	40	1	21	4.5
L1943.43T-1440-V	M8	43	21.5	1440	80	40	1	21	4.5
L1943.43T-1520-V	M8	43	21.5	1520	80	40	1	21	4.5
L1943.43T-1600-V	M8	43	21.5	1600	80	40	1	21	4.5
L1943.43T-1680-V	M8	43	21.5	1680	80	40	1	21	4.5
L1943.43T-1760-V	M8	43	21.5	1760	80	40	1	21	4.5
L1943.43T-1840-V	M8	43	21.5	1840	80	40	1	21	4.5
L1943.43T-1920-V	M8	43	21.5	1920	80	40	1	21	4.5
L1943.43T-2000-V	M8	43	21.5	2000	80	40	1	21	4.5
L1943.43T-2080-V	M8	43	21.5	2080	80	40	1	21	4.5
L1943.43T-2160-V	M8	43	21.5	2160	80	40	1	21	4.5
L1943.43T-2240-V	M8	43	21.5	2240	80	40	1	21	4.5
L1943.43T-2320-V	M8	43	21.5	2320	80	40	1	21	4.5
L1943.43T-2400-V	M8	43	21.5	2400	80	40	1	21	4.5
L1943.43T-2480-V	M8	43	21.5	2480	80	40	1	21	4.5
L1943.43T-2560-V	M8	43	21.5	2560	80	40	1	21	4.5
L1943.43T-2640-V	M8	43	21.5	2640	80	40	1	21	4.5
L1943.43T-2720-V	M8	43	21.5	2720	80	40	1	21	4.5
L1943.43T-2800-V	M8	43	21.5	2800	80	40	1	21	4.5



Order No.	d <sub>1</sub> for screw	h <sub>1</sub>	h <sub>2</sub>	l <sub>1</sub>	l <sub>2</sub>	l <sub>3</sub>	r <sub>1</sub>	w <sub>1</sub>	w <sub>2</sub>
L1943.43T-2880-V	M8	43	21.5	2880	80	40	1	21	4.5
L1943.43T-2960-V	M8	43	21.5	2960	80	40	1	21	4.5
L1943.43T-3040-V	M8	43	21.5	3040	80	40	1	21	4.5
L1943.43T-3120-V	M8	43	21.5	3120	80	40	1	21	4.5
L1943.43T-3200-V	M8	43	21.5	3200	80	40	1	21	4.5
L1943.43T-3280-V	M8	43	21.5	3280	80	40	1	21	4.5
L1943.43T-3360-V	M8	43	21.5	3360	80	40	1	21	4.5
L1943.43T-3440-V	M8	43	21.5	3440	80	40	1	21	4.5
L1943.43T-3520-V	M8	43	21.5	3520	80	40	1	21	4.5
L1943.43T-3600-V	M8	43	21.5	3600	80	40	1	21	4.5
L1943.43T-3680-V	M8	43	21.5	3680	80	40	1	21	4.5
L1943.43T-3760-V	M8	43	21.5	3760	80	40	1	21	4.5
L1943.43T-3840-V	M8	43	21.5	3840	80	40	1	21	4.5
L1943.43T-3920-V	M8	43	21.5	3920	80	40	1	21	4.5
L1943.43T-4000-V	M8	43	21.5	4000	80	40	1	21	4.5
L1943.43T-4080-V	M8	43	21.5	4080	80	40	1	21	4.5