

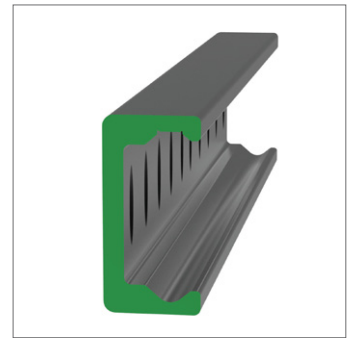
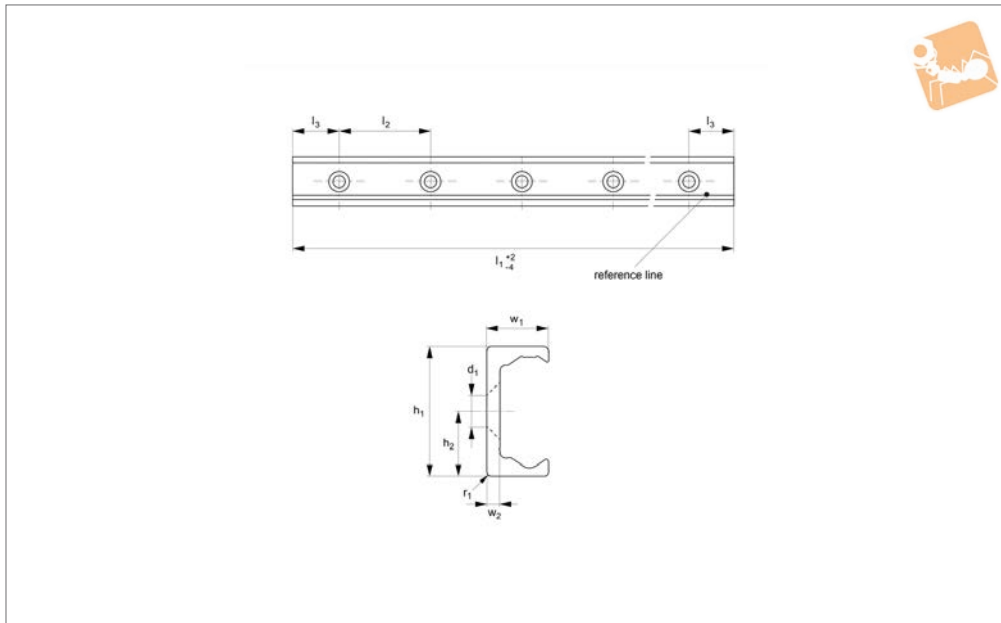


Heavy Duty K Rail

countersunk holes



Long Linear Rails



L1943.KLV43

LONG LINEAR RAILS

Material

Carbon steel. Raceways induction hardened and ground.
Electrolytic zinc-plated (excluding raceways).

Technical Notes

The K rail is a master rail and is usually used with a U slave rail (allows for system

misalignment in two planes).

This is the countersunk rail type which is usually used with a corresponding ULV rail. For fixing use countersunk DIN 7991 screws.

Weight: 2,6 Kg/m.

Tips

Standard carriages are the L1943.N

versions (die cast aluminium alloy with wipers). Alternatively the L1943.C type is also available (without wipers).

Important Notes

K Rails are not suited for vertical applications.

Order No.	d ₁ for screw	h ₁	h ₂	l ₁	l ₂	l ₃	r	w ₁	w ₂
L1943.KLV43-0400	M8	43	21.5	400	80	40	1	21	4.5
L1943.KLV43-0480	M8	43	21.5	480	80	40	1	21	4.5
L1943.KLV43-0560	M8	43	21.5	560	80	40	1	21	4.5
L1943.KLV43-0640	M8	43	21.5	640	80	40	1	21	4.5
L1943.KLV43-0720	M8	43	21.5	720	80	40	1	21	4.5
L1943.KLV43-0800	M8	43	21.5	800	80	40	1	21	4.5
L1943.KLV43-0880	M8	43	21.5	880	80	40	1	21	4.5
L1943.KLV43-0960	M8	43	21.5	960	80	40	1	21	4.5
L1943.KLV43-1040	M8	43	21.5	1040	80	40	1	21	4.5
L1943.KLV43-1120	M8	43	21.5	1120	80	40	1	21	4.5
L1943.KLV43-1200	M8	43	21.5	1200	80	40	1	21	4.5
L1943.KLV43-1280	M8	43	21.5	1280	80	40	1	21	4.5
L1943.KLV43-1360	M8	43	21.5	1360	80	40	1	21	4.5
L1943.KLV43-1440	M8	43	21.5	1440	80	40	1	21	4.5
L1943.KLV43-1520	M8	43	21.5	1520	80	40	1	21	4.5
L1943.KLV43-1600	M8	43	21.5	1600	80	40	1	21	4.5
L1943.KLV43-1680	M8	43	21.5	1680	80	40	1	21	4.5
L1943.KLV43-1760	M8	43	21.5	1760	80	40	1	21	4.5
L1943.KLV43-1840	M8	43	21.5	1840	80	40	1	21	4.5
L1943.KLV43-1920	M8	43	21.5	1920	80	40	1	21	4.5
L1943.KLV43-2000	M8	43	21.5	2000	80	40	1	21	4.5
L1943.KLV43-2080	M8	43	21.5	2080	80	40	1	21	4.5
L1943.KLV43-2160	M8	43	21.5	2160	80	40	1	21	4.5
L1943.KLV43-2240	M8	43	21.5	2240	80	40	1	21	4.5
L1943.KLV43-2320	M8	43	21.5	2320	80	40	1	21	4.5
L1943.KLV43-2400	M8	43	21.5	2400	80	40	1	21	4.5
L1943.KLV43-2480	M8	43	21.5	2480	80	40	1	21	4.5
L1943.KLV43-2560	M8	43	21.5	2560	80	40	1	21	4.5
L1943.KLV43-2640	M8	43	21.5	2640	80	40	1	21	4.5



LONG LINEAR RAILS

Order No.	d ₁ for screw	h ₁	h ₂	l ₁	l ₂	l ₃	r	w ₁	w ₂
L1943.KLV43-2720	M8	43	21.5	2720	80	40	1	21	4.5
L1943.KLV43-2800	M8	43	21.5	2800	80	40	1	21	4.5
L1943.KLV43-2880	M8	43	21.5	2880	80	40	1	21	4.5
L1943.KLV43-2960	M8	43	21.5	2960	80	40	1	21	4.5
L1943.KLV43-3040	M8	43	21.5	3040	80	40	1	21	4.5
L1943.KLV43-3120	M8	43	21.5	3120	80	40	1	21	4.5
L1943.KLV43-3200	M8	43	21.5	3200	80	40	1	21	4.5
L1943.KLV43-3280	M8	43	21.5	3280	80	40	1	21	4.5
L1943.KLV43-3360	M8	43	21.5	3360	80	40	1	21	4.5
L1943.KLV43-3440	M8	43	21.5	3440	80	40	1	21	4.5
L1943.KLV43-3520	M8	43	21.5	3520	80	40	1	21	4.5
L1943.KLV43-3600	M8	43	21.5	3600	80	40	1	21	4.5
L1943.43K-0400-V	M8	43	21.5	400	80	40	1	21	4.5
L1943.43K-0480-V	M8	43	21.5	480	80	40	1	21	4.5
L1943.43K-0560-V	M8	43	21.5	560	80	40	1	21	4.5
L1943.43K-0640-V	M8	43	21.5	640	80	40	1	21	4.5
L1943.43K-0720-V	M8	43	21.5	720	80	40	1	21	4.5
L1943.43K-0800-V	M8	43	21.5	800	80	40	1	21	4.5
L1943.43K-0880-V	M8	43	21.5	880	80	40	1	21	4.5
L1943.43K-0960-V	M8	43	21.5	960	80	40	1	21	4.5
L1943.43K-1040-V	M8	43	21.5	1040	80	40	1	21	4.5
L1943.43K-1120-V	M8	43	21.5	1120	80	40	1	21	4.5
L1943.43K-1200-V	M8	43	21.5	1200	80	40	1	21	4.5
L1943.43K-1280-V	M8	43	21.5	1280	80	40	1	21	4.5
L1943.43K-1360-V	M8	43	21.5	1360	80	40	1	21	4.5
L1943.43K-1440-V	M8	43	21.5	1440	80	40	1	21	4.5
L1943.43K-1520-V	M8	43	21.5	1520	80	40	1	21	4.5
L1943.43K-1600-V	M8	43	21.5	1600	80	40	1	21	4.5
L1943.43K-1680-V	M8	43	21.5	1680	80	40	1	21	4.5
L1943.43K-1760-V	M8	43	21.5	1760	80	40	1	21	4.5
L1943.43K-1840-V	M8	43	21.5	1840	80	40	1	21	4.5
L1943.43K-1920-V	M8	43	21.5	1920	80	40	1	21	4.5
L1943.43K-2000-V	M8	43	21.5	2000	80	40	1	21	4.5
L1943.43K-2080-V	M8	43	21.5	2080	80	40	1	21	4.5
L1943.43K-2160-V	M8	43	21.5	2160	80	40	1	21	4.5
L1943.43K-2240-V	M8	43	21.5	2240	80	40	1	21	4.5
L1943.43K-2320-V	M8	43	21.5	2320	80	40	1	21	4.5
L1943.43K-2400-V	M8	43	21.5	2400	80	40	1	21	4.5
L1943.43K-2480-V	M8	43	21.5	2480	80	40	1	21	4.5
L1943.43K-2560-V	M8	43	21.5	2560	80	40	1	21	4.5
L1943.43K-2640-V	M8	43	21.5	2640	80	40	1	21	4.5
L1943.43K-2720-V	M8	43	21.5	2720	80	40	1	21	4.5
L1943.43K-2800-V	M8	43	21.5	2800	80	40	1	21	4.5
L1943.43K-2880-V	M8	43	21.5	2880	80	40	1	21	4.5
L1943.43K-2960-V	M8	43	21.5	2960	80	40	1	21	4.5
L1943.43K-3040-V	M8	43	21.5	3040	80	40	1	21	4.5
L1943.43K-3120-V	M8	43	21.5	3120	80	40	1	21	4.5
L1943.43K-3200-V	M8	43	21.5	3200	80	40	1	21	4.5
L1943.43K-3280-V	M8	43	21.5	3280	80	40	1	21	4.5
L1943.43K-3360-V	M8	43	21.5	3360	80	40	1	21	4.5
L1943.43K-3440-V	M8	43	21.5	3440	80	40	1	21	4.5
L1943.43K-3520-V	M8	43	21.5	3520	80	40	1	21	4.5
L1943.43K-3600-V	M8	43	21.5	3600	80	40	1	21	4.5
L1943.43K-3680-V	M8	43	21.5	3680	80	40	1	21	4.5
L1943.43K-3760-V	M8	43	21.5	3760	80	40	1	21	4.5
L1943.43K-3840-V	M8	43	21.5	3840	80	40	1	21	4.5
L1943.43K-3920-V	M8	43	21.5	3920	80	40	1	21	4.5
L1943.43K-4000-V	M8	43	21.5	4000	80	40	1	21	4.5
L1943.43K-4080-V	M8	43	21.5	4080	80	40	1	21	4.5