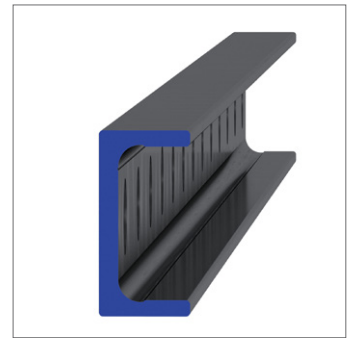
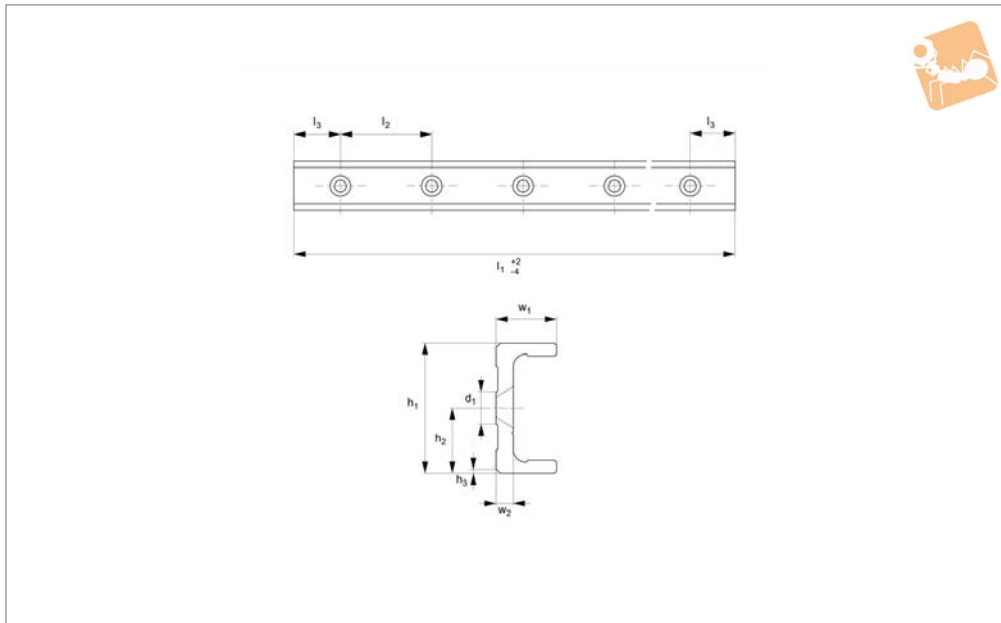


# Very Heavy Duty U Rail

countersunk holes

## Long Linear Rails



## L1963.63U-V

LONG LINEAR RAILS

### Material

Carbon steel. Raceways induction hardened and ground.  
Electrolytic zinc-plated (excluding raceways).

### Technical Notes

The U rail is a slave rail and is usually used

with a T master rail.

This is the ULV countersunk rail type which is usually used with a corresponding TLV rail.

For fixing use countersunk DIN 7991 screws.

Weight: 6,0 Kg/m.

### Tips

Standard carriages are the L1963.N versions (die cast aluminium alloy with wipers). Alternatively the L1963.C type is also available (without wipers).

Order No.	d <sub>1</sub>	h <sub>1</sub>	h <sub>2</sub>	h <sub>3</sub>	l <sub>1</sub>	l <sub>2</sub>	l <sub>3</sub>	w <sub>1</sub>	w <sub>2</sub>
L1963.63U-0400-V	M8	63	31.5	2x45°	400	80	40	28	8
L1963.63U-0480-V	M8	63	31.5	2x45°	480	80	40	28	8
L1963.63U-0560-V	M8	63	31.5	2x45°	560	80	40	28	8
L1963.63U-0640-V	M8	63	31.5	2x45°	640	80	40	28	8
L1963.63U-0720-V	M8	63	31.5	2x45°	720	80	40	28	8
L1963.63U-0800-V	M8	63	31.5	2x45°	800	80	40	28	8
L1963.63U-0880-V	M8	63	31.5	2x45°	880	80	40	28	8
L1963.63U-0960-V	M8	63	31.5	2x45°	960	80	40	28	8
L1963.63U-1040-V	M8	63	31.5	2x45°	1040	80	40	28	8
L1963.63U-1120-V	M8	63	31.5	2x45°	1120	80	40	28	8
L1963.63U-1200-V	M8	63	31.5	2x45°	1200	80	40	28	8
L1963.63U-1280-V	M8	63	31.5	2x45°	1280	80	40	28	8
L1963.63U-1360-V	M8	63	31.5	2x45°	1360	80	40	28	8
L1963.63U-1440-V	M8	63	31.5	2x45°	1440	80	40	28	8
L1963.63U-1520-V	M8	63	31.5	2x45°	1520	80	40	28	8
L1963.63U-1600-V	M8	63	31.5	2x45°	1600	80	40	28	8
L1963.63U-1680-V	M8	63	31.5	2x45°	1680	80	40	28	8
L1963.63U-1760-V	M8	63	31.5	2x45°	1760	80	40	28	8
L1963.63U-1840-V	M8	63	31.5	2x45°	1840	80	40	28	8
L1963.63U-1920-V	M8	63	31.5	2x45°	1920	80	40	28	8
L1963.63U-2000-V	M8	63	31.5	2x45°	2000	80	40	28	8
L1963.63U-2080-V	M8	63	31.5	2x45°	2080	80	40	28	8
L1963.63U-2160-V	M8	63	31.5	2x45°	2160	80	40	28	8
L1963.63U-2240-V	M8	63	31.5	2x45°	2240	80	40	28	8
L1963.63U-2320-V	M8	63	31.5	2x45°	2320	80	40	28	8
L1963.63U-2400-V	M8	63	31.5	2x45°	2400	80	40	28	8
L1963.63U-2480-V	M8	63	31.5	2x45°	2480	80	40	28	8
L1963.63U-2560-V	M8	63	31.5	2x45°	2560	80	40	28	8
L1963.63U-2640-V	M8	63	31.5	2x45°	2640	80	40	28	8
L1963.63U-2720-V	M8	63	31.5	2x45°	2720	80	40	28	8
L1963.63U-2800-V	M8	63	31.5	2x45°	2800	80	40	28	8



Order No.	d <sub>1</sub>	h <sub>1</sub>	h <sub>2</sub>	h <sub>3</sub>	l <sub>1</sub>	l <sub>2</sub>	l <sub>3</sub>	w <sub>1</sub>	w <sub>2</sub>
L1963.63U-2880-V	M8	63	31.5	2x45°	2880	80	40	28	8
L1963.63U-2960-V	M8	63	31.5	2x45°	2960	80	40	28	8
L1963.63U-3040-V	M8	63	31.5	2x45°	3040	80	40	28	8
L1963.63U-3120-V	M8	63	31.5	2x45°	3120	80	40	28	8
L1963.63U-3200-V	M8	63	31.5	2x45°	3200	80	40	28	8
L1963.63U-3280-V	M8	63	31.5	2x45°	3280	80	40	28	8
L1963.63U-3360-V	M8	63	31.5	2x45°	3360	80	40	28	8
L1963.63U-3440-V	M8	63	31.5	2x45°	3440	80	40	28	8
L1963.63U-3520-V	M8	63	31.5	2x45°	3520	80	40	28	8
L1963.63U-3600-V	M8	63	31.5	2x45°	3600	80	40	28	8
L1963.63U-3680-V	M8	63	31.5	2x45°	3680	80	40	28	8
L1963.63U-3760-V	M8	63	31.5	2x45°	3760	80	40	28	8
L1963.63U-3840-V	M8	63	31.5	2x45°	3840	80	40	28	8
L1963.63U-3920-V	M8	63	31.5	2x45°	3920	80	40	28	8
L1963.63U-4000-V	M8	63	31.5	2x45°	4000	80	40	28	8
L1963.63U-4080-V	M8	63	31.5	2x45°	4080	80	40	28	8