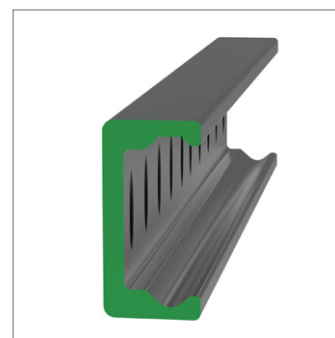
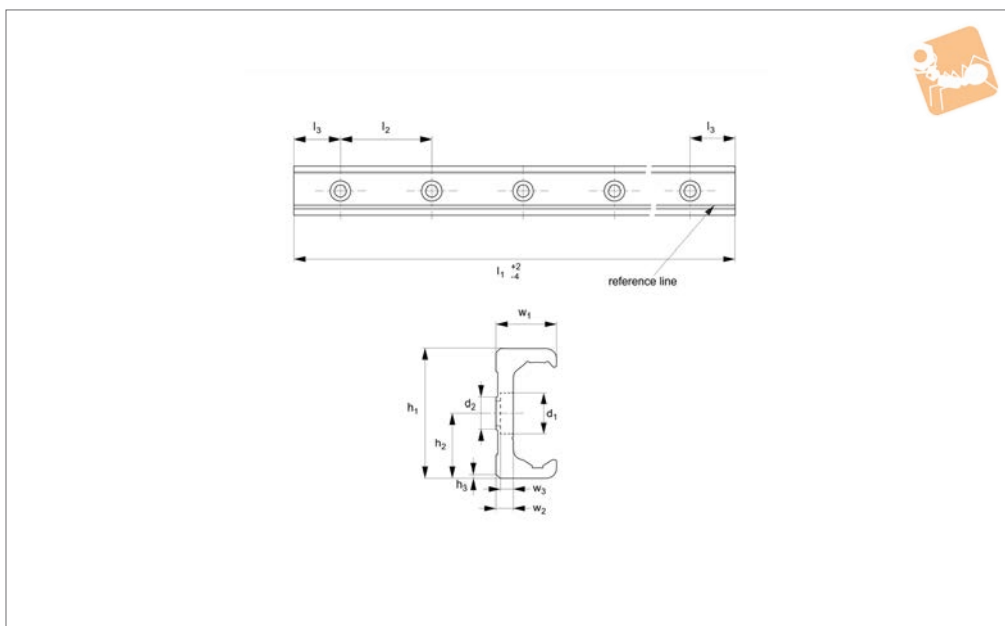


Very Heavy Duty K Rail

counterbored holes

Long Linear Rails



L1963.KLC63

LONG LINEAR RAILS

Material

Carbon steel. Raceways induction hardened and ground.

Electrolytic zinc-plated (excluding raceways).

Technical Notes

The K rail is a master rail and is usually used with a U slave rail (allows for system misalignment in two planes).

This is the counterbored rail type (most popular), which is usually used with a corresponding ULC rail.

Special low profile Torx head screws provided free of charge.

Weight: 6,0 Kg/m.

Tips

Standard carriages are the L1963.N versions (die cast aluminium alloy with

wipers). Alternatively the L1963.C type is also available (without wipers).

Important Notes

K Rails are not suited for vertical applications.

Order No.	d ₁	d ₂ for screws	h ₁	h ₂	h ₃	l ₁	l ₂	l ₃	w ₁	w ₂	w ₃
L1963.KLC63-0400	15	M8	63	31.5	2x45°	400	80	40	28	8	5.2
L1963.KLC63-0480	15	M8	63	31.5	2x45°	480	80	40	28	8	5.2
L1963.KLC63-0560	15	M8	63	31.5	2x45°	560	80	40	28	8	5.2
L1963.KLC63-0640	15	M8	63	31.5	2x45°	640	80	40	28	8	5.2
L1963.KLC63-0720	15	M8	63	31.5	2x45°	720	80	40	28	8	5.2
L1963.KLC63-0800	15	M8	63	31.5	2x45°	800	80	40	28	8	5.2
L1963.KLC63-0880	15	M8	63	31.5	2x45°	880	80	40	28	8	5.2
L1963.KLC63-0960	15	M8	63	31.5	2x45°	960	80	40	28	8	5.2
L1963.KLC63-1040	15	M8	63	31.5	2x45°	1040	80	40	28	8	5.2
L1963.KLC63-1120	15	M8	63	31.5	2x45°	1120	80	40	28	8	5.2
L1963.KLC63-1200	15	M8	63	31.5	2x45°	1200	80	40	28	8	5.2
L1963.KLC63-1280	15	M8	63	31.5	2x45°	1280	80	40	28	8	5.2
L1963.KLC63-1360	15	M8	63	31.5	2x45°	1360	80	40	28	8	5.2
L1963.KLC63-1440	15	M8	63	31.5	2x45°	1440	80	40	28	8	5.2
L1963.KLC63-1520	15	M8	63	31.5	2x45°	1520	80	40	28	8	5.2
L1963.KLC63-1600	15	M8	63	31.5	2x45°	1600	80	40	28	8	5.2
L1963.KLC63-1680	15	M8	63	31.5	2x45°	1680	80	40	28	8	5.2
L1963.KLC63-1760	15	M8	63	31.5	2x45°	1760	80	40	28	8	5.2
L1963.KLC63-1840	15	M8	63	31.5	2x45°	1840	80	40	28	8	5.2
L1963.KLC63-1920	15	M8	63	31.5	2x45°	1920	80	40	28	8	5.2
L1963.KLC63-2000	15	M8	63	31.5	2x45°	2000	80	40	28	8	5.2
L1963.KLC63-2080	15	M8	63	31.5	2x45°	2080	80	40	28	8	5.2
L1963.KLC63-2160	15	M8	63	31.5	2x45°	2160	80	40	28	8	5.2
L1963.KLC63-2240	15	M8	63	31.5	2x45°	2240	80	40	28	8	5.2
L1963.KLC63-2320	15	M8	63	31.5	2x45°	2320	80	40	28	8	5.2
L1963.KLC63-2400	15	M8	63	31.5	2x45°	2400	80	40	28	8	5.2
L1963.KLC63-2480	15	M8	63	31.5	2x45°	2480	80	40	28	8	5.2
L1963.KLC63-2560	15	M8	63	31.5	2x45°	2560	80	40	28	8	5.2



Order No.	d ₁	d ₂ for screws	h ₁	h ₂	h ₃	l ₁	l ₂	l ₃	w ₁	w ₂	w ₃
L1963.KLC63-2640	15	M8	63	31.5	2x45°	2640	80	40	28	8	5.2
L1963.KLC63-2720	15	M8	63	31.5	2x45°	2720	80	40	28	8	5.2
L1963.KLC63-2800	15	M8	63	31.5	2x45°	2800	80	40	28	8	5.2
L1963.KLC63-2880	15	M8	63	31.5	2x45°	2880	80	40	28	8	5.2
L1963.KLC63-2960	15	M8	63	31.5	2x45°	2960	80	40	28	8	5.2
L1963.KLC63-3040	15	M8	63	31.5	2x45°	3040	80	40	28	8	5.2
L1963.KLC63-3120	15	M8	63	31.5	2x45°	3120	80	40	28	8	5.2
L1963.KLC63-3200	15	M8	63	31.5	2x45°	3200	80	40	28	8	5.2
L1963.KLC63-3280	15	M8	63	31.5	2x45°	3280	80	40	28	8	5.2
L1963.KLC63-3360	15	M8	63	31.5	2x45°	3360	80	40	28	8	5.2
L1963.KLC63-3440	15	M8	63	31.5	2x45°	3440	80	40	28	8	5.2
L1963.KLC63-3520	15	M8	63	31.5	2x45°	3520	80	40	28	8	5.2
L1963.KLC63-3600	15	M8	63	31.5	2x45°	3600	80	40	28	8	5.2
L1963.KLC63-3680	15	M8	63	31.5	2x45°	3680	80	40	28	8	5.2
L1963.KLC63-3760	15	M8	63	31.5	2x45°	3760	80	40	28	8	5.2
L1963.KLC63-3840	15	M8	63	31.5	2x45°	3840	80	40	28	8	5.2
L1963.KLC63-3920	15	M8	63	31.5	2x45°	3920	80	40	28	8	5.2
L1963.KLC63-4000	15	M8	63	31.5	2x45°	4000	80	40	28	8	5.2
L1963.KLC63-4080	15	M8	63	31.5	2x45°	4080	80	40	28	8	5.2