

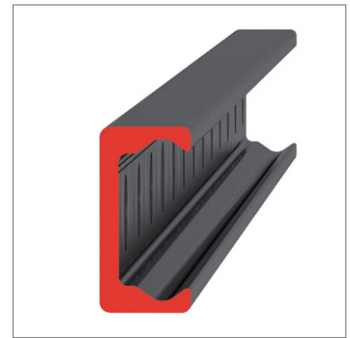
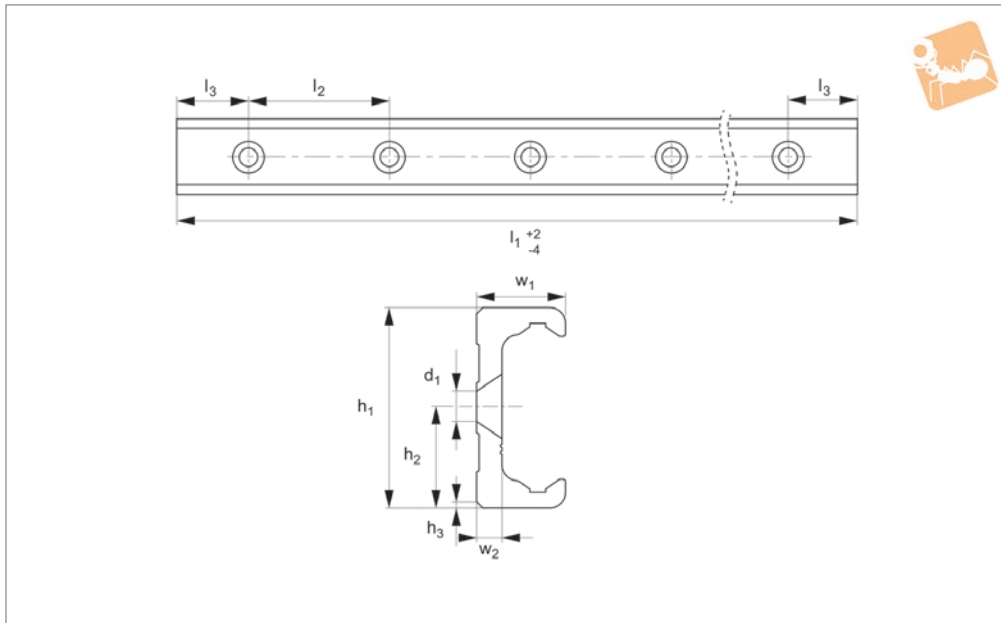


Very Heavy Duty T Rail

countersunk holes



Long Linear
Rails



L1963.TLV63

LONG LINEAR RAILS

Material

Carbon steel. Raceways induction hardened and ground.
Electrolytic zinc-plated (excluding raceways).

Technical Notes

The T rail is a master rail and is usually

used with a U slave rails (allows for misalignment).

This is the TLV countersunk rail which is usually used with a corresponding ULV rail. For fixing use countersunk DIN 7991 screws.

Weight: 6,0 Kg/m.

Tips

Standard carriages are the L1963.N versions (die cast aluminium alloy with wipers). Alternatively the L1963.C type is also available (without wipers).

Order No.	d ₁ for screw	h ₁	h ₂	h ₃	l ₁	l ₂	l ₃	w ₁	w ₂
L1963.TLV63-0400	M10	63	31.5	2x45°	400	80	40	28	8
L1963.TLV63-0480	M10	63	31.5	2x45°	480	80	40	28	8
L1963.TLV63-0560	M10	63	31.5	2x45°	560	80	40	28	8
L1963.TLV63-0640	M10	63	31.5	2x45°	640	80	40	28	8
L1963.TLV63-0720	M10	63	31.5	2x45°	720	80	40	28	8
L1963.TLV63-0800	M10	63	31.5	2x45°	800	80	40	28	8
L1963.TLV63-0880	M10	63	31.5	2x45°	880	80	40	28	8
L1963.TLV63-0960	M10	63	31.5	2x45°	960	80	40	28	8
L1963.TLV63-1040	M10	63	31.5	2x45°	1040	80	40	28	8
L1963.TLV63-1120	M10	63	31.5	2x45°	1120	80	40	28	8
L1963.TLV63-1200	M10	63	31.5	2x45°	1200	80	40	28	8
L1963.TLV63-1280	M10	63	31.5	2x45°	1280	80	40	28	8
L1963.TLV63-1360	M10	63	31.5	2x45°	1360	80	40	28	8
L1963.TLV63-1440	M10	63	31.5	2x45°	1440	80	40	28	8
L1963.TLV63-1520	M10	63	31.5	2x45°	1520	80	40	28	8
L1963.TLV63-1600	M10	63	31.5	2x45°	1600	80	40	28	8
L1963.TLV63-1680	M10	63	31.5	2x45°	1680	80	40	28	8
L1963.TLV63-1760	M10	63	31.5	2x45°	1760	80	40	28	8
L1963.TLV63-1840	M10	63	31.5	2x45°	1840	80	40	28	8
L1963.TLV63-1920	M10	63	31.5	2x45°	1920	80	40	28	8
L1963.TLV63-2000	M10	63	31.5	2x45°	2000	80	40	28	8
L1963.TLV63-2080	M10	63	31.5	2x45°	2080	80	40	28	8
L1963.TLV63-2160	M10	63	31.5	2x45°	2160	80	40	28	8
L1963.TLV63-2240	M10	63	31.5	2x45°	2240	80	40	28	8
L1963.TLV63-2320	M10	63	31.5	2x45°	2320	80	40	28	8
L1963.TLV63-2400	M10	63	31.5	2x45°	2400	80	40	28	8
L1963.TLV63-2480	M10	63	31.5	2x45°	2480	80	40	28	8
L1963.TLV63-2560	M10	63	31.5	2x45°	2560	80	40	28	8
L1963.TLV63-2640	M10	63	31.5	2x45°	2640	80	40	28	8
L1963.TLV63-2720	M10	63	31.5	2x45°	2720	80	40	28	8
L1963.TLV63-2800	M10	63	31.5	2x45°	2800	80	40	28	8



Order No.	d ₁ for screw	h ₁	h ₂	h ₃	l ₁	l ₂	l ₃	w ₁	w ₂
L1963.TLV63-2880	M10	63	31.5	2x45°	2880	80	40	28	8
L1963.TLV63-2960	M10	63	31.5	2x45°	2960	80	40	28	8
L1963.TLV63-3040	M10	63	31.5	2x45°	3040	80	40	28	8
L1963.TLV63-3120	M10	63	31.5	2x45°	3120	80	40	28	8
L1963.TLV63-3200	M10	63	31.5	2x45°	3200	80	40	28	8
L1963.TLV63-3280	M10	63	31.5	2x45°	3280	80	40	28	8
L1963.TLV63-3360	M10	63	31.5	2x45°	3360	80	40	28	8
L1963.TLV63-3440	M10	63	31.5	2x45°	3440	80	40	28	8
L1963.TLV63-3520	M10	63	31.5	2x45°	3520	80	40	28	8
L1963.TLV63-3600	M10	63	31.5	2x45°	3600	80	40	28	8
L1963.TLV63-3680	M10	63	31.5	2x45°	3680	80	40	28	8
L1963.TLV63-3760	M10	63	31.5	2x45°	3760	80	40	28	8
L1963.TLV63-3840	M10	63	31.5	2x45°	3840	80	40	28	8
L1963.TLV63-3920	M10	63	31.5	2x45°	3920	80	40	28	8
L1963.TLV63-4000	M10	63	31.5	2x45°	4000	80	40	28	8
L1963.TLV63-4080	M10	63	31.5	2x45°	4080	80	40	28	8