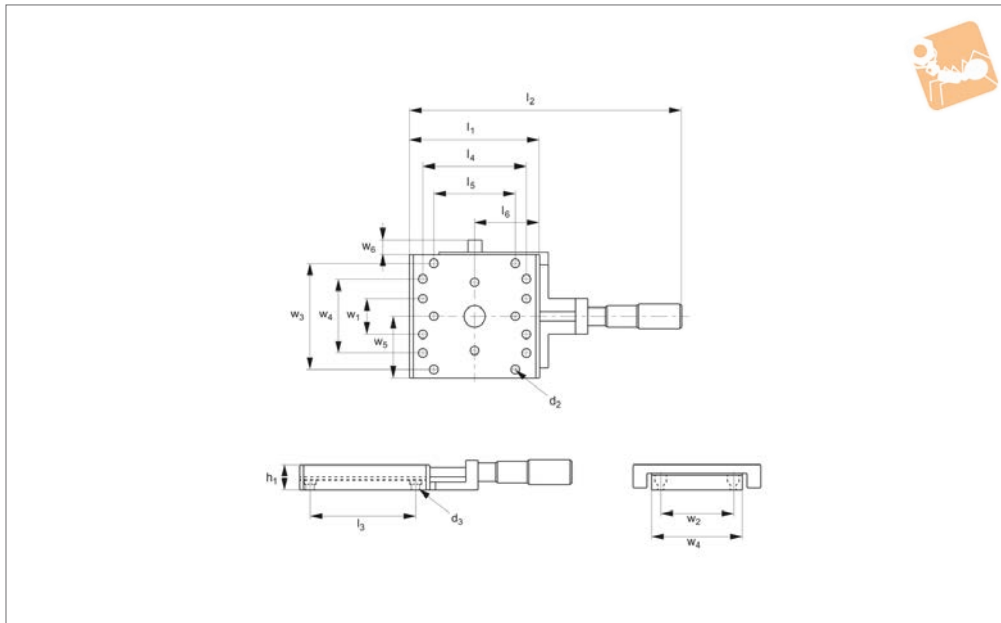
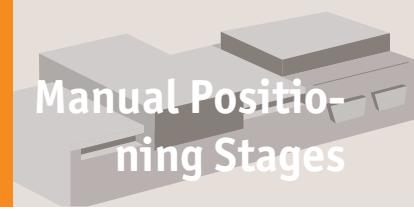




Front Micrometer Stages

further fixing holes detail

Manual Positioning Stages



L3100.FH

MANUAL POSITIONING STAGES

Material

Aluminium carriage and base, black anodised steel fixing, hardened steel shafts and balls and roller elements.

Technical Notes

For main dimensions and load ratings

please see product page then refer to this information for detailed hole fixing data. These tables simply show additional mounting and fixing hole information. Dimensions l_6 and w_7 relate to optional posilock device.

Important Notes

Stroke is centred on the mid-point of the slides (ie 50% of total stroke each way). **3D CAD available.**

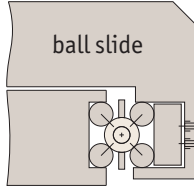
Order No.	l_1	l_2	l_3	l_4	l_5	l_6	d_2	d_3 for	w_1	w_2	w_3	w_4	w_5	w_6
L3100.0099-X	19.1	57.9	13.5	14.3	7.9	-	M2	M2	13.5	7.9	-	-	14.3	-
L3100.0101-X	31.8	82.6	25.4	25.4	17.5	32.1	M2	M2	25.4	12.7	-	23.9	17.5	5.7
L3100.0201-X	44.5	95.3	38.1	38.1	30.2	38.5	M2	M2	38.1	25.4	-	36.6	30.2	5.7
L3100.0301-X	38.1	88.9	30.1	30.1	0.0	29.5	M3	M3	-	30.1	-	22.2	-	6.1
L3100.0450-X	44.5	111.3	33.3	25.4	-	45.0	M4	M4	25.4	-	-	22.2	-	6.1
L3100.0451-X	44.5	149.4	33.3	25.4	0.0	60.7	M4	M4	25.4	16.7	-	22.2	-	6.1
L3100.0453-X	44.5	111.3	33.3	25.4	-	45.0	M5	M5	25.4	16.7	-	38.1	-	6.1
L3100.0750-X	66.5	133.4	50.8	50.8	35.9	45.5	M5	M5	22.2	-	-	38.1	-	6.1
L3100.0751-X	66.5	171.5	50.8	50.8	35.9	60.7	M5	M5	22.2	-	-	38.1	-	6.1
L3100.0753-X	66.5	133.4	50.8	50.8	?	45.5	M5	M5	22.2	-	-	38.1	-	6.1
L3100.0401-X	50.8	117.3	41.1	25.4	-	45.0	M4	M4	22.2	-	-	22.2	-	6.4
L3100.0501-X	82.6	148.8	69.9	56.0	28.0	45.0	M4	M4	22.2	-	-	22.2	-	6.4
L3100.0502-X	82.6	188.2	69.9	56.0	28.0	60.7	M4	M4	22.2	-	-	22.2	-	6.4
L3100.0701-X	101.6	168.1	85.9	50.8	-	45.0	M5	M5	31.8	-	-	38.1	-	6.4
L3100.0702-X	101.6	209.6	85.9	50.8	-	60.7	M5	M5	31.8	-	-	38.1	-	6.4
L3100.1201-X	79.2	184.2	66.7	54.0	31.5	44.5	M5	M5	66.7	54.0	31.5	-	-	5.9
L3100.1203-X	79.2	184.2	66.7	54.0	31.5	44.5	M5	M5	66.7	54.0	31.5	-	-	5.9
L3100.2201-X	104.6	208.6	92.1	79.4	31.5	57.2	M5	M5	92.1	79.4	31.5	-	-	5.9
L3100.2202-X	104.6	260.4	92.1	79.4	31.5	57.2	M5	M5	92.1	79.4	31.5	-	-	5.9
L3100.2203-X	104.6	209.6	92.1	79.4	31.5	57.2	M5	M5	92.1	79.4	31.5	-	-	5.9
L3100.2204-X	104.6	206.4	92.1	79.4	31.5	57.2	M5	M5	92.1	79.4	31.5	-	-	5.9
L3100.3201-X	130.2	235.0	117.5	104.8	31.5	69.9	M5	M5	117.5	104.8	31.5	-	-	5.9
L3100.3202-X	130.2	285.8	117.5	104.8	31.5	69.9	M5	M5	117.5	104.8	31.5	-	-	5.9
L3100.3203-X	130.2	235.0	117.5	104.8	31.5	69.9	M5	M5	117.5	104.8	31.5	-	-	5.9
L3100.3204-X	130.2	285.8	117.5	104.8	31.5	69.9	M5	M5	117.5	104.8	31.5	-	-	5.9



There are two different load ratings for these stages.

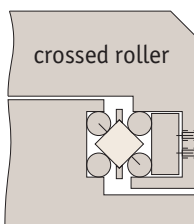
Ball slides:

These have precision steel balls rolling in the tracks. They are the least expensive, loads up to 28Kg.



Cross roller slides:

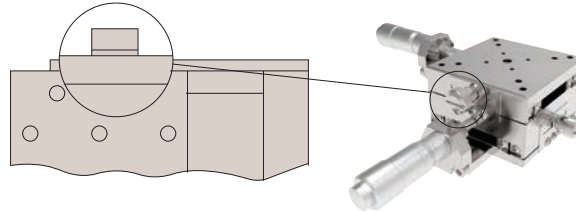
These have the same dimensions but have rollers allowing the slide to carry large loads and absorb greater moment loads up to 54Kg.



Locking options

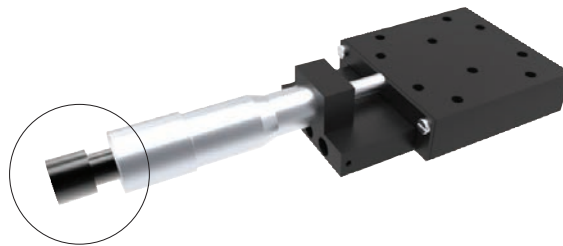
Posi-lock:

Allows locking of the carriage in place with a friction locking mechanism.



Locking micrometer:

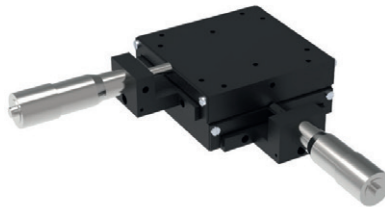
Locking of the micrometer to fix the micrometer setting.



Front drive micrometer positioning stages



X Stage



XY Stage

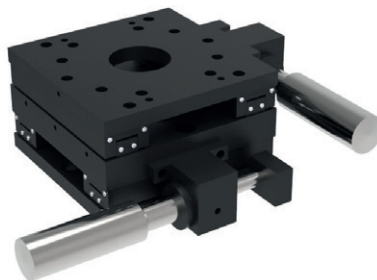


XYZ Stage

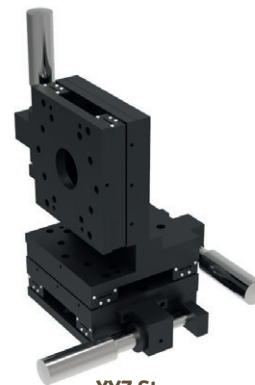
Side drive micrometer positioning stages



X Stage



XY Stage



XYZ Stage

Also available in stainless steel.