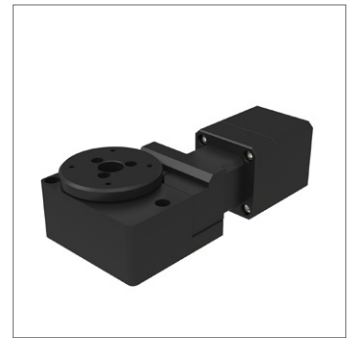
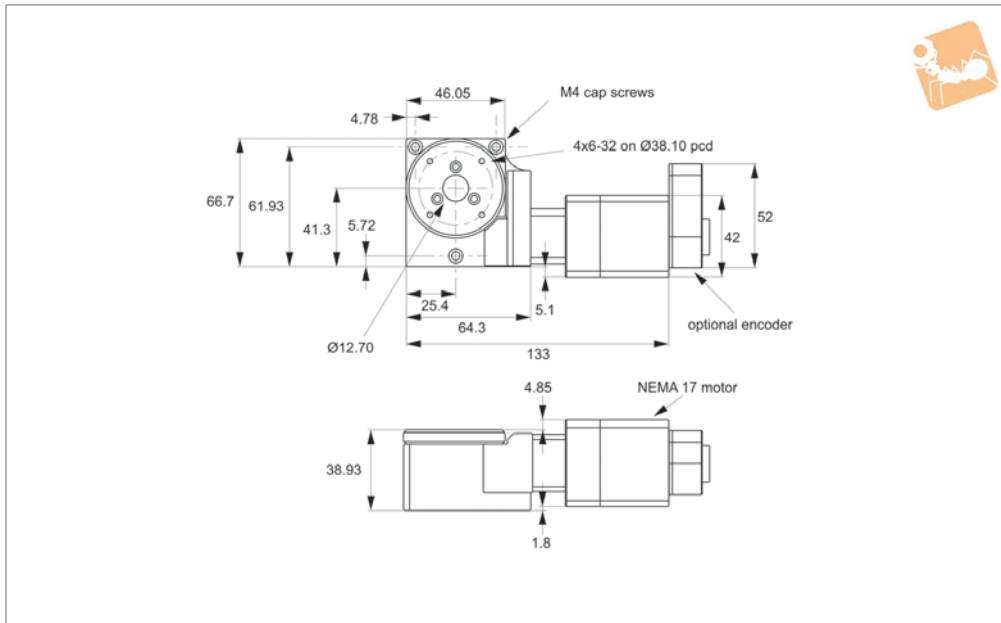
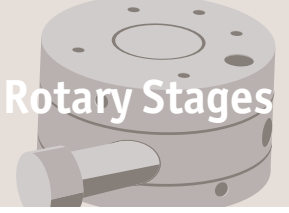




# Motorised Rotary Stages Ø50

high precision, medium duty

## Rotary Stages



## L3550

ROTARY STAGES

### Material

Aluminium alloy body (light, stiff and stable), black anodised.  
Weight 0,45 Kg.

### Technical Notes

The design utilises a thrust bearing system for the table movement. This offers excellent stability at low cost, but as a result, is not really suitable for use in a vertical application. For vertical applications see Controllable from PC or PLC when used in conjunction with a motion controller. Controllers come with their own software but you can also use your own pre-existing software with them such as Labview etc.

Integrated stepper motor has a motion controller built into it. The stages are offered with different gear ratio options. A proprietary preload system ensures zero backlash in the gear train. The travel is 360° continuous. Easy to use plug and play system when used with a motion controller. Can be used in conjunction with motorised linear stages for multi-axis applications.

### Tips

Requires external home switch (if required).

Motor options:

**Stepper** - Nema 17, high torque, brushless.

0.95 Amp/phase, 5.0 Ohm/phase, 3.1 mH/phase, 1.8°/step. Optionally with 1000 line rotary encoder.

**Intelligent stepper** - Nema 17 with a fully programmable motion controller inbuilt (i.e. no need for an external motion controller). Two +5 to +24VDC I/O lines. One 10 bit analogue input selectable 0 to +10VDC, 0 to +5VDC. RS422/485 communications. Input voltage +24VDC. Optionally with 512 line rotary encoder. Drawings show stepper motor configuration. See special pages for further motor options.

Order No.	Motor	Speed °/s max.	Horizontal load kg max.	Vertical load kg max.	Moment load Nm max.	Weight kg
L3550.050-STA	Stepper	30°	4.5	0.3	1.7	0.45
L3550.050-IMA	Int. stepper & enc.	30°	4.5	0.3	1.7	0.45
L3550.050-STB	Stepper	50°	4.5	0.3	1.7	0.45
L3550.050-STC	Stepper & enc.	30°	4.5	0.3	1.7	0.45
L3550.050-STD	Stepper & enc.	50°	4.5	0.3	1.7	0.45
L3550.050-IMB	Int. stepper & enc.	50°	4.5	0.3	1.7	0.45

Order No.	Accuracy ± arc-secs	Uni-directional repeatability ± arc-secs	Bi-directional repeatability ± arc-secs	Gear ratio	Resolution ± arc-secs
L3550.050-STA	70"	5"	45"	80:1	0,3"
L3550.050-IMA	70"	5"	45"	80:1	0,3"
L3550.050-STB	70"	5"	45"	40:1	0,6"
L3550.050-STC	70"	5"	45"	80:1	0,3"
L3550.050-STD	70"	5"	45"	40:1	0,6"
L3550.050-IMB	70"	5"	45"	40:1	0,6"



### Factors affecting stage selection

- Size and weight of load (including any moment loads)
- Accuracy (positioning, repeatability and resolution)
- Speed of rotation required
- Means of control

Parameters	High precision
Table diameters (mm)	50-200
Maximum loads (Kg) Horizontal Vertical	125 125
Maximum speed °/sec Stepper motor Servo motor	25-50 180-360
Accuracy (arc-secs) Positioning Repeatability Resolution	70" 5" <0,7"
Control options	Stepper, servo or intelligent motor Motion controllers available

\*Dependent on stage selected

### Factors affecting stage performance

#### Run-out

The displacement of a measure sensor placed on the surface of the rotary table.

#### Applied loads

These cause small deformations in the stage bearings and are dependent on the stiffness of the stage, the bearings and the stability and flatness of the mounting surface.

#### Hysteresis errors

The difference between the control and instructed position.

#### Backlash errors

Errors caused by the reversal of the direction of travel affected by clearance in the drive chain.

#### Encoder errors

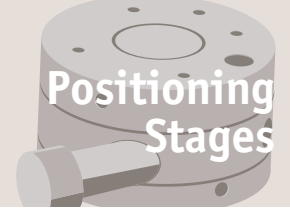
Imperfections in the operations of the encoder (if present).



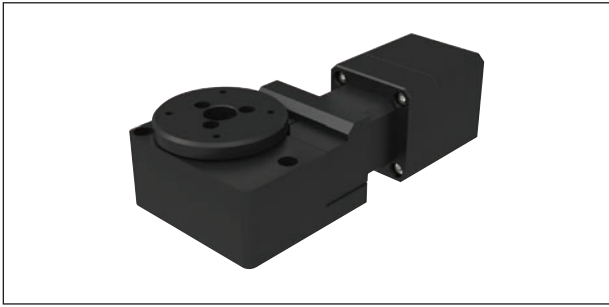
# Rotary Stages

High precision overview

# Positioning Stages

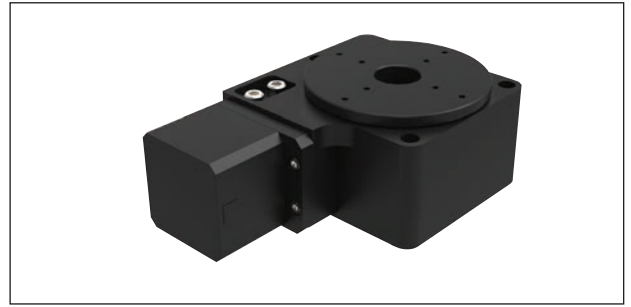


ROTARY STAGES



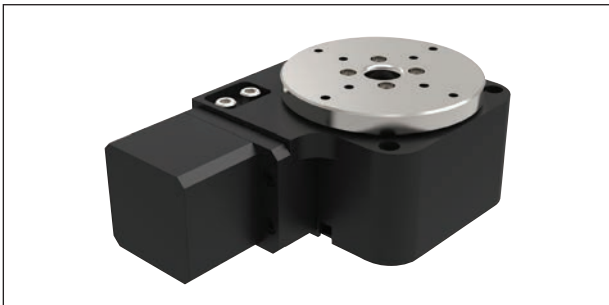
**L3550 Ø50 Rotary stage**

- Motorised.
- Accurate to 70 arc-secs, repeatedly to 3 arc/sec.
- Loads up to 4.5kg.



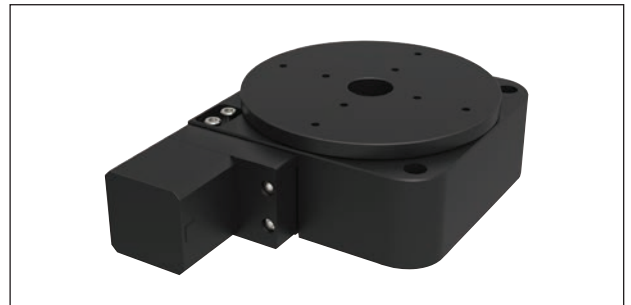
**L3552 Ø75 Rotary stage**

- Motorised.
- Accurate to 70 arc-secs, repeatedly to 5 arc-secs.
- Loads up to 11kg.



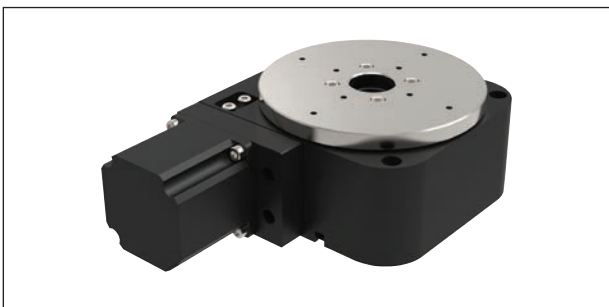
**L3554 Ø75 Rotary stage, heavy duty**

- Heavy duty.
- Motorised.
- Accurate to 70 arc-secs, repeatedly to 3 arc-secs.
- Loads up to 20kg.



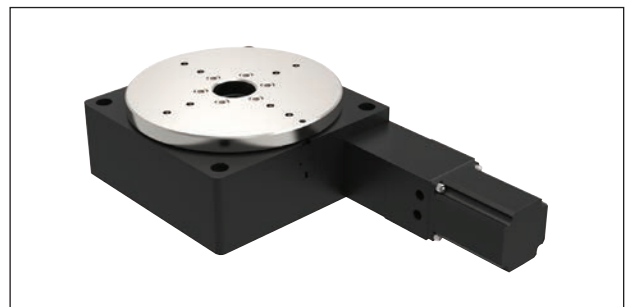
**L3556 Ø125 Rotary stage, medium duty**

- Motorised.
- Accurate to 70 arc-secs, repeatedly to 5 arc-secs.
- Loads up to 25kg.



**L3558 Ø125 Rotary stage, heavy duty**

- Heavy duty.
- Motorised.
- Accurate to 70 arc-secs, repeatedly to 3 arc-secs.
- Loads up to 45kg.



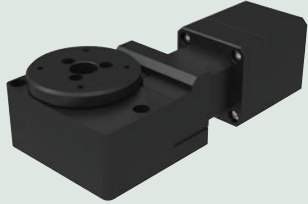


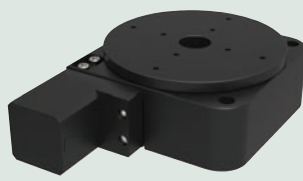
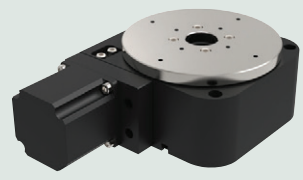
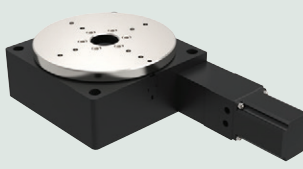
**L3662 Ø200 Rotary stage**

- Motorised.
- Accurate to 70 arc-secs, repeatedly to 5 arc-secs.
- Loads up to 125kg.

ov-rotary-stages-high-precision-overview-rmh - Updated - 03-03-2023



Positioning Stages from Automation Components

Part no.	Stepper	MDrive	Servo
L3550 	✓	✓	✗
L3552 	✓	✓	✗
L3554 	✓	✓	✓
L3556 	✓	✓	✗
L3558 	✓	✓	✗
L3562 	✓	✓	✓