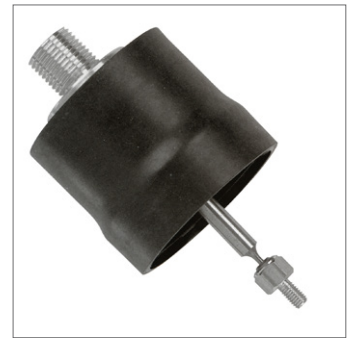
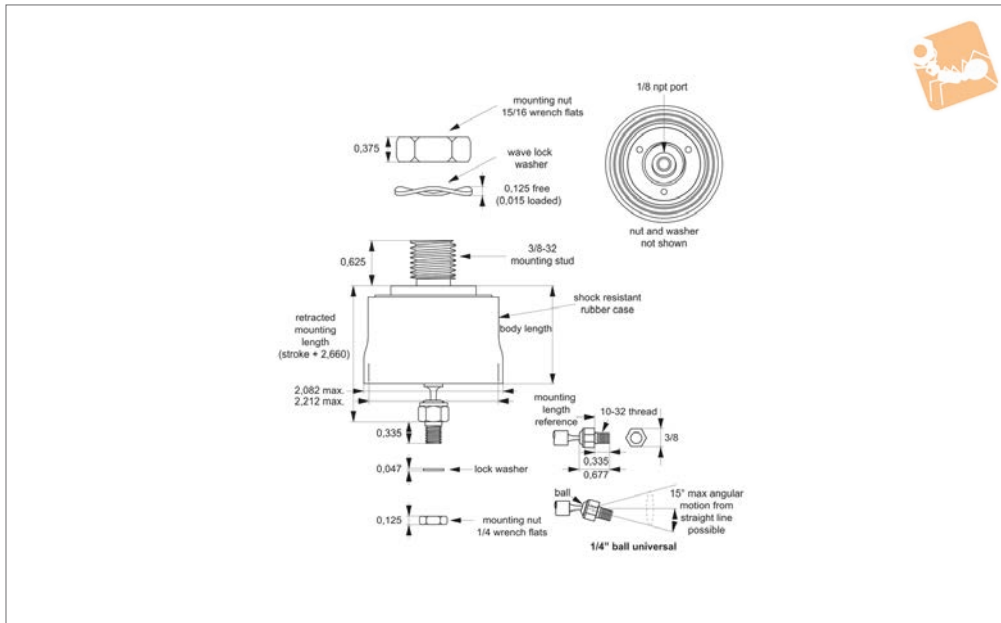




Actuator 1.75" bore

Cylinders



L4600

CYLINDERS

Material

Graphite carbon piston.
Annealed borosilicate glass cylinder.
Precision fire-polished bore.
Stainless steel piston rod (AISI 304).
Shock resistant rubber case.

Technical Notes

Piston area = 2.405 in² (1551.61mm²)
Pressure range = full vacuum - 100 psi (0.69 MPa)
Force factor:
Piston area x pressure = output force.

Max force = 1070.61N (at 0.69 MPa)
Minimum pressure differential required for actuation = 0.05 psi (345 Pa)
Friction coefficient = 0.2
Force without side load typically 0.5% - 1.5% of load.
Operating temperature range: -55°C to 150°C.
If operating at temperatures about +70°C, please advise when placing order.

Mounting data:

Mounting hole:
Round: 0.625" min (16mm).
Suggested mounting bracket thickness = 0.250" max (6.35mm).
Mounting nut torque:
Head = 40-60 in-lb (4.5-6.8 Nm).
Rod end = 5-15 in-lb (0.56-1.70 Nm).

* Full stroke is obtained with customer held mounting tolerance of ±0.015" (0.038mm).

Order No.	Stroke	Rod end linkage	Bore dia.	Leak at 50 psi max. SL/min	Leak at 100 psi max. SL/min	Body length
L4600.0500	0,5"	1/4" Ball	1,75"	3.6	15.0	1,697"
L4600.1000	1,0"	1/4" Ball	1,75"	3.6	15.0	2,197"
L4600.2000	2,0"	1/4" Ball	1,75"	3.6	15.0	3,197"
L4600.3000	3,0"	1/4" Ball	1,75"	3.6	15.0	4,197"
L4600.4000	4,0"	1/4" Ball	1,75"	3.6	15.0	5,197"
L4600.5000	5,0"	1/4" Ball	1,75"	3.6	15.0	6,197"
L4600.6000	6,0"	1/4" Ball	1,75"	3.6	15.0	7,197"