

## P2041

ANTI-VIBRATION COMPONENTS

### Material

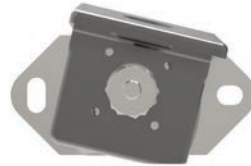
Rubber on zinc plated steel.

Order No.	Type	d <sub>1</sub>	l <sub>1</sub>	d <sub>2</sub>	d <sub>3</sub>	h <sub>1</sub>	Compression max.	Static load kgf max.
P2041.050	Type 1	50	-	10.5	-	15	2.2	180
P2041.085	Type 1	85	-	10.5	-	15	1.6	450
P2041.155	Type 2	55	25	M12	-	16	2.2	180
P2041.185	Type 2	85	25	M12	-	16	1.6	450
P2041.225	Type 2	125	25	M12	-	16	2.2	800
P2041.550	Type 3	50	-	6.0	45	18	2	50
P2041.591	Type 3	91	-	6.5	86	18	2	350
P2041.638	Type 3	138	-	10.5	130	25	2.6	900



## Recommendations for machine mounts

Machine mounts should be installed between two parallel and perfectly flat surfaces. Mounts operating tilted or twisted do not work properly. This may be due to incorrect alignment, tolerances in the building of the structure or over-tightened torque during the installation of the anti-vibration mounts.



incorrect X



correct ✓



incorrect X



correct ✓



incorrect X



correct ✓



incorrect X



correct ✓



incorrect X



correct ✓