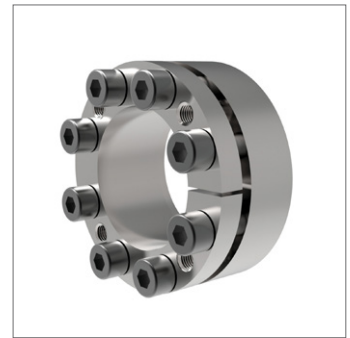
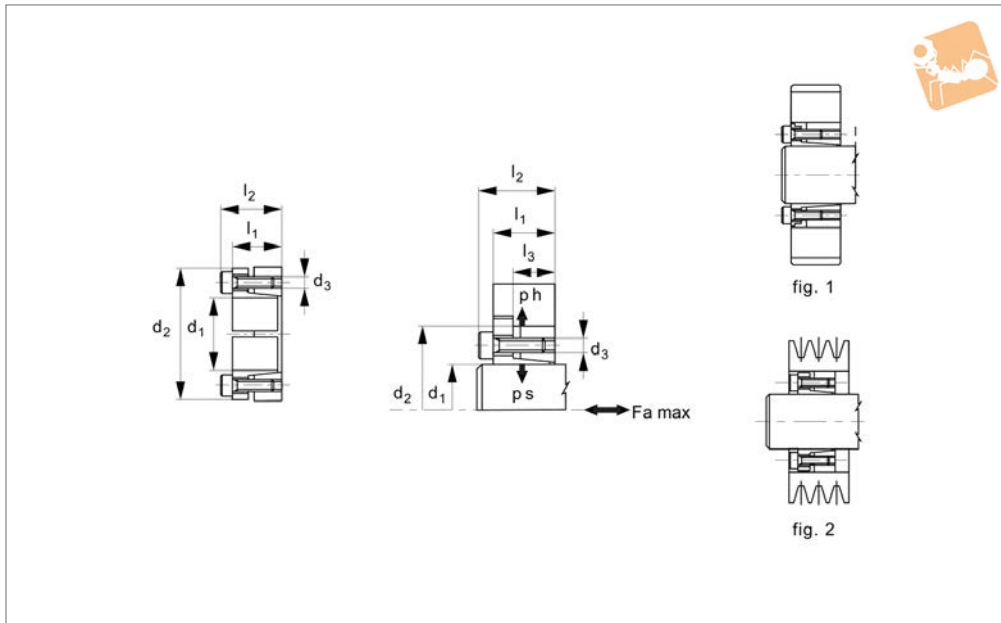




Keyless Locking Devices

self centring, high torque

Rigid Couplings



R3230

RIGID COUPLINGS

Material

Steel.

Technical Notes

Economical, quick installation, compact size.

Tolerances: Inner diameter h8, outer diameter H8.

Surface Roughness: Rt max. 16µm, Ra 3µm

Tips

Do not use any oil with molybdenum bisulfide, high pressure additives, or grease as these reduce the coefficient of

friction.

Max Torque (M_t) and Axial Thrust (F_a) values are only valid if standard oils are used.

Important Notes

Assembly:

Carefully clean the hub and shaft contact surfaces and apply a film of lightweight oil. Slide the locking assembly into the hub bore, insert the shaft and tighten gradually in cross sequence to indicated torque.

When tightening the mounting screws the hub has slight axial movement with respect to the shaft.

Dismantling:

Gradually loosen the cap screws. Remove and re-insert the correct number of screws into the jacking holes and tighten gradually and regularly in crossed sequence until the back cone is released.

If the element is to be re-used then re-lubricate screws and threads.

| Order No. | d_1 tol. h8 | l_1 | d_2 tol. H8 | l_2 | No. of screws | d_3 | Torque to Nm | M_t torque Nm max. | F_a kN max. | P_h N/mm ² max. | P_s N/mm ² max. | Weight kg |
|-----------|------------------|-------|------------------|-------|---------------|--------|-----------------|----------------------------|---------------------|------------------------------------|------------------------------------|--------------|
| R3230.019 | 19 | 28 | 47 | 34 | 5 | M 6x20 | 14 | 355 | 31 | 120 | 280 | 0.250 |
| R3230.020 | 20 | 28 | 47 | 34 | 5 | M 6x20 | 14 | 360 | 33 | 120 | 280 | 0.250 |
| R3230.022 | 22 | 28 | 47 | 34 | 5 | M 6x20 | 14 | 400 | 33 | 123 | 268 | 0.250 |
| R3230.024 | 24 | 28 | 50 | 34 | 6 | M 6x20 | 14 | 440 | 36 | 120 | 243 | 0.276 |
| R3230.025 | 25 | 28 | 50 | 34 | 6 | M 6x20 | 14 | 560 | 36 | 138 | 280 | 0.268 |
| R3230.028 | 28 | 28 | 55 | 34 | 6 | M 6x20 | 14 | 625 | 36 | 128 | 250 | 0.322 |
| R3230.030 | 30 | 28 | 55 | 34 | 6 | M 6x20 | 14 | 650 | 36 | 128 | 235 | 0.304 |
| R3230.032 | 32 | 28 | 60 | 34 | 8 | M 6x20 | 14 | 950 | 50 | 150 | 290 | 0.370 |
| R3230.035 | 35 | 28 | 60 | 34 | 8 | M 6x20 | 14 | 1050 | 50 | 150 | 268 | 0.344 |
| R3230.038 | 38 | 28 | 65 | 34 | 8 | M 6x20 | 14 | 1140 | 50 | 146 | 252 | 0.408 |
| R3230.040 | 40 | 28 | 65 | 34 | 8 | M 6x20 | 14 | 1200 | 50 | 146 | 232 | 0.378 |
| R3230.042 | 42 | 33 | 75 | 41 | 7 | M 8x25 | 35 | 2034 | 70 | 168 | 305 | 0.630 |
| R3230.045 | 45 | 33 | 75 | 41 | 7 | M 8x25 | 35 | 2180 | 70 | 168 | 285 | 0.610 |
| R3230.048 | 48 | 33 | 80 | 41 | 8 | M 8x25 | 35 | 1800 | 75 | 140 | 330 | 0.680 |
| R3230.050 | 50 | 33 | 80 | 41 | 7 | M 8x25 | 35 | 2430 | 85 | 158 | 258 | 0.690 |
| R3230.055 | 55 | 33 | 85 | 41 | 8 | M 8x25 | 35 | 3050 | 85 | 173 | 268 | 0.720 |
| R3230.060 | 60 | 33 | 90 | 41 | 8 | M 8x25 | 35 | 3350 | 85 | 163 | 243 | 0.794 |
| R3230.065 | 65 | 33 | 95 | 41 | 9 | M 8x25 | 35 | 4080 | 85 | 173 | 253 | 0.842 |
| R3230.070 | 70 | 40 | 110 | 50 | 8 | M10x30 | 70 | 6280 | 119 | 178 | 278 | 1.534 |
| R3230.075 | 75 | 40 | 115 | 50 | 8 | M10x30 | 70 | 6680 | 119 | 168 | 258 | 1.634 |
| R3230.080 | 80 | 40 | 120 | 50 | 8 | M10x30 | 70 | 7130 | 119 | 168 | 248 | 1.722 |
| R3230.085 | 85 | 40 | 125 | 50 | 9 | M10x30 | 70 | 8750 | 132 | 178 | 258 | 1.834 |
| R3230.090 | 90 | 40 | 130 | 50 | 9 | M10x30 | 70 | 9080 | 132 | 168 | 248 | 1.900 |



| Order No. | d ₁ tol. h8 | l ₁ | d ₂ tol. H8 | l ₂ | No. of screws | d ₃ | Torque to Nm | M _i torque Nm max. | F _a kN max. | P _n N/mm ² max. | P _s N/mm ² max. | Weight kg |
|------------------|---------------------------|----------------|---------------------------|----------------|---------------|----------------|-----------------|-------------------------------------|------------------------------|---|---|--------------|
| R3230.095 | 95 | 40 | 135 | 50 | 10 | M10x30 | 70 | 10580 | 132 | 178 | 258 | 1.980 |
| R3230.100 | 100 | 44 | 145 | 56 | 8 | M12x35 | 125 | 13380 | 170 | 188 | 268 | 2.618 |
| R3230.110 | 110 | 44 | 155 | 56 | 8 | M12x35 | 125 | 14580 | 170 | 178 | 238 | 2.788 |
| R3230.120 | 120 | 44 | 165 | 56 | 9 | M12x35 | 125 | 17880 | 200 | 178 | 248 | 3.600 |
| R3230.130 | 130 | 52 | 180 | 64 | 12 | M14x40 | 190 | 25950 | 270 | 168 | 238 | 4.410 |
| R3230.140 | 140 | 54 | 190 | 68 | 9 | M14x40 | 190 | 26950 | 270 | 148 | 208 | 4.920 |
| R3230.150 | 150 | 54 | 200 | 68 | 10 | M14x40 | 190 | 32950 | 320 | 168 | 228 | 5.200 |
| R3230.160 | 160 | 54 | 210 | 68 | 11 | M14x41 | 190 | 37950 | 470 | 168 | 230 | 5.601 |
| R3230.170 | 170 | 64 | 255 | 78 | 12 | M14x42 | 190 | 44950 | 528 | 130 | 180 | 7.701 |
| R3230.180 | 180 | 64 | 235 | 78 | 12 | M14x43 | 190 | 46950 | 528 | 130 | 170 | 8.501 |
| R3230.190 | 190 | 64 | 250 | 78 | 15 | M14x40 | 190 | 50100 | 520 | 130 | 170 | 9.501 |
| R3230.200 | 200 | 64 | 260 | 78 | 15 | M14x40 | 190 | 52700 | 530 | 130 | 160 | 9.601 |