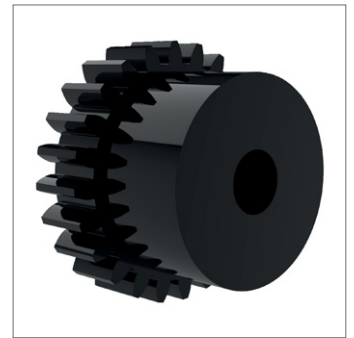
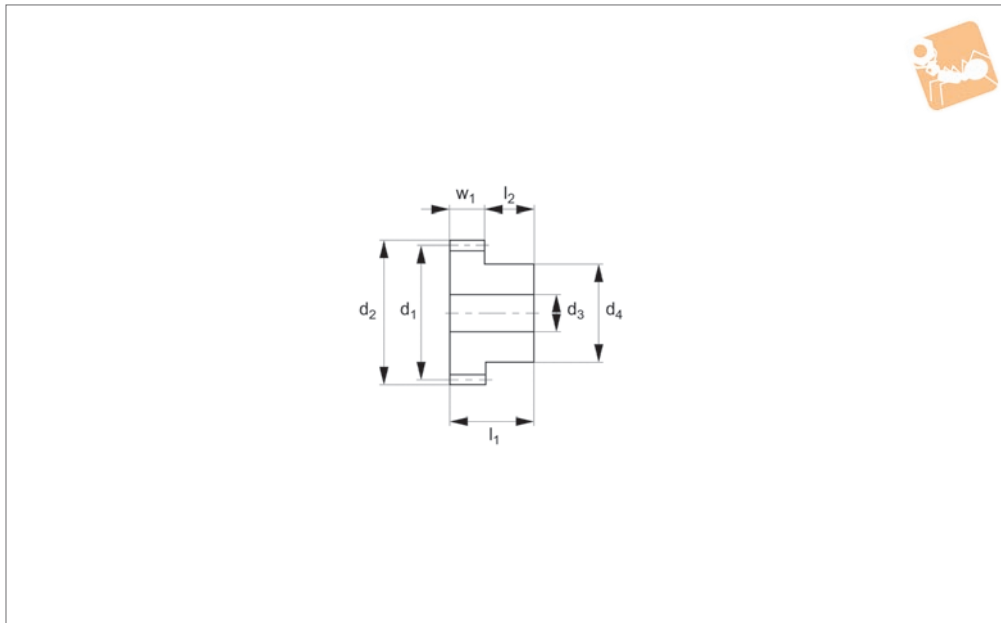




# Spur Gears - Module 0.5 - Plastic

black - 20-30 teeth



**R5115**

STANDARD SPUR GEARS

**Material**

Black polyacetal, injection molded.  
Accuracy to JIS B 1702-1 (ISO) class 11.

**Technical Notes**

20° pressure angle, full depth tooth.  
Amount of backlash when assembling

gears= 0,01- 0,03 mm.

**Tips**

Module 0.5 for gears with 40-100 teeth see R5116. Max. allowable torque (Nm) is based on standard operating conditions (see technical pages) with a safety factor

of 1.2. For non standard applications apply a suitable safety factor depending on frequency of use, type of working etc.e, type of working etc.

Order No.	Module	No. of teeth z	Pitch dia. d <sub>1</sub>	d <sub>2</sub>	w <sub>1</sub>	d <sub>3</sub> tol. H9	d <sub>4</sub>	l <sub>1</sub>	l <sub>2</sub>	Torque Nm max.	Weight g
R5115.050-020	m 0.5	20	10	11	4	3	8	8	4	0.176	0.9
R5115.050-024	m 0.5	24	12	13	3	3	10	8	5	0.158	1.0
R5115.050-030	m 0.5	30	15	16	3	3	10	8	5	0.198	1.2